

## **Agenda for Overview Committee** **Tuesday, 30th September, 2025, 6.00 pm**

### **Members of Overview Committee**

Councillors: A Bailey, B Bailey, B Collins, R Collins, T Dumper (Vice-Chair), P Fernley, D Haggerty, A Hall (Chair), M Hall, M Hartnell, J Heath, Y Levine, D Mackinder, H Riddell and D Wilson

**Venue:** Council Chamber, Blackdown House, Honiton

**Contact:** Sarah James;

01395 519978 email [sjames@eastdevon.gov.uk](mailto:sjames@eastdevon.gov.uk)

(or group number 01395 517546)

Monday, 22 September 2025



East Devon District Council  
Blackdown House  
Border Road  
Heathpark Industrial Estate  
Honiton  
EX14 1EJ

DX 48808 HONITON

Tel: 01404 515616

**[www.eastdevon.gov.uk](http://www.eastdevon.gov.uk)**

- 1 Minutes of the previous meeting held on 17 July 2025 (Pages 3 - 7)
- 2 Apologies
- 3 Declarations of interest  
Guidance is available online to Councillors and co-opted members on making [declarations of interest](#).
- 4 Public Speaking  
Information on [public speaking](#) is available online.
- 5 Matters of urgency  
Information on [matters of urgency](#) is available online.
- 6 Confidential/exempt item(s)  
To agree any items to be dealt with after the public (including press) have been excluded. There are **no** items that officers recommend should be dealt with in this way.
- 7 Blackdown Hills National Landscape Annual Review and Management Plan (Pages 8 - 19)
- 8 Public Spaces Protection Orders consultation (Pages 20 - 86)
- 9 Public toilets programme review (Pages 87 - 95)
- 10 Work Programme 2025 - 2026 (Pages 96 - 108)

To consider the Cabinet Forward Plan; would the Committee wish to receive a report on key decisions prior to Cabinet?

Under the Openness of Local Government Bodies Regulations 2014, any members of the public are now allowed to take photographs, film and audio record the proceedings and report on all public meetings (including on social media). No prior notification is needed but it would be helpful if you could let the democratic services team know you plan to film or record so that any necessary arrangements can be made to provide reasonable facilities for you to report on meetings. This permission does not extend to private meetings or parts of meetings which are not open to the public. You should take all recording and photography equipment with you if a public meeting moves into a session which is not open to the public.

If you are recording the meeting, you are asked to act in a reasonable manner and not disrupt the conduct of meetings for example by using intrusive lighting, flash photography or asking people to repeat statements for the benefit of the recording. You may not make an oral commentary during the meeting. The Chairman has the power to control public recording and/or reporting so it does not disrupt the meeting.

Members of the public exercising their right to speak during Public Question Time will be recorded.

[Decision making and equalities](#)

**For a copy of this agenda in large print, please contact the Democratic Services Team on 01395 517546**

## **EAST DEVON DISTRICT COUNCIL**

### **Minutes of the meeting of Overview Committee held at Council Chamber, Blackdown House, Honiton on 17 July 2025**

#### **Attendance list at end of document**

The meeting started at 6.00 pm and ended at 8.35 pm

#### **35 Minutes of the previous meeting held on 27 March 2025**

The minutes of the previous meeting held on 27 March 2025 were approved as a true and accurate record.

#### **36 Declarations of interest**

Minute 40, Exmouth Motorhome Parking – Overnight Stopovers  
Cllr Tim Dumper, Affects Non-Registerable Interest, Former member of the Exmouth Town Council Motorhomes TAFF.

Minute 40, Exmouth Motorhome Parking – Overnight Stopovers  
Cllr Paula Fernley, Affects Non-Registerable Interest, Has a campervan.

Minute 40, Exmouth Motorhome Parking – Overnight Stopovers  
Cllr Geoff Jung, Affects Non-Registerable Interest, Sat on the Exmouth Town Council Motorhomes TAFF.

Minute 40, Exmouth Motorhome Parking – Overnight Stopovers  
Cllr Steve Gazzard, Affects Non-Registerable Interest, Member of Exmouth Town Council and member of the Exmouth Town Council Motorhomes TAFF.

#### **37 Public Speaking**

Two members of the public had registered to speak at the meeting.

Mr Robert Kathro spoke in connection with Exmouth Motorhomes Parking – Overnight Stopovers item (minute 40 refers). He outlined shortcomings with the public consultation, including the data collection exercise and reporting and analysis of the results. Mr Kathro also spoke of issues around fire safety, rule breaking, lack of enforcement, and financial questions, many of which were identified within the report but to which credible and meaningful solutions were not provided. He requested that the Committee rejects the proposals before them and suggested that they needed to be reworked.

The Democratic Services Officer read out a statement of behalf of Mr Sav Spall, concerning Exmouth Motorhomes Parking – Overnight Stopovers (minute 40 refers). Mr Spall strongly opposed the policy of allowing overnight stopovers for motorhomes on the seafront and in Maer Road Car Park. He outlined examples of inconsiderate behaviour and unsafe practices which were not being policed, and parking restrictions which were not being enforced. He asked why out of town car parks were not being used to accommodate vehicles, given this would be easier for the Council to regulate and would make owners have to walk through the town to the seafront, providing footfall for shops, cafes and restaurants. Mr Spall referred to the public consultation which he said should

have been a fair and democratic process but in effect, served only to promote and entice motorhomes and campervans to the seafront.

38 **Matters of urgency**

There were no matters of urgency.

39 **Confidential/exempt item(s)**

There were no confidential/exempt items.

40 **Exmouth Motorhome Parking - Overnight Stopovers**

The Parking Services Manager presented his report which set out recommendations for a number of proposed changes to the overnight stopover arrangements for motorhomes in two Exmouth car parks, following public consultation. The recommendations had been formally endorsed by Exmouth Town Council in April 2025.

The Chair welcomed Exmouth Town Councillor Fred Caygill who was attending as an external witness in his capacity as Chair of Exmouth Town Council's Motorhome Task and Finish Forum (TAFF). A briefing paper provided by the Town Council had been published with the agenda papers and Cllr Caygill verbally outlined the background and context to the TAFF's recommendations.

Discussion and clarification included the following points:

- The council's current policy on motorhome parking is set out in the Parking Strategy.
- Some members were of the view that motorhomes on the seafront should be banned. On visiting Exmouth, they were surprised at the number of motorhomes in the area, taking up spaces which could otherwise be used by local families who want to enjoy the beach.
- Other members noted that campervans are popular worldwide and it is not feasible to ban them. The Council needs to cater for them which in turn helps the local population who do not want campervans parked outside their driveways and on residential streets.
- There is dedicated parking enforcement daily except for Christmas Day; however, there is no resource for enforcement beyond 6pm and into the night.
- Members noted that RingGo would prevent people from paying to stay for more than 3 consecutive nights but were concerned that no enforcement is in place to stop people from returning after 6.00pm, and parking overnight for free. The Parking Services Manager responded that from experience, most people are conscientious and observe the restrictions. He added that enforcement officers are active from 6.00am.
- It was suggested that 2 consecutive nights would be more appropriate for stopovers, still allowing people to stay and enjoy the town and seafront.
- The Council has committed to accept payment by cash for as long as practically possible; however, it is intended to only take payment by RingGo for motorhomes parking, as a specific and bespoke solution to the particular problem of people parking for longer than the maximum stay restrictions.
- Some members were of the view that Queen's Drive Echelon is unsuitable for campervans and motorhomes. Spaces cannot accommodate vehicles of the size which typically have on-board facilities, and the closest public toilets are closed overnight from 10.00pm. The Parking Services Manager responded that there is an expectation for people to be responsible and use the facilities for waste disposal as they need them. There is no requirement for their vehicles to be self-contained, however he felt the nature of the recommendations would naturally attract vehicles that have on-board facilities.
- Members felt that the overnight stopover fee was too low at £15.00 for 24 hours given that it costs £8.00 to park a car for the day, and motorhomes would benefit from

enhanced facilities. It was suggested to set the fee at £20.00, with the £5.00 uplift to be ringfenced to increase enforcement activity, in the most appropriate way.

- Members proposed that the overnight stopover arrangements are monitored and reviewed annually at the appropriate scrutiny committee.

### **RECOMMENDED to Cabinet:**

Improvements to overnight stopover arrangements as follows:

1. Install a drive-over grey wastewater (shower and dishwater) disposal point in Maer Road car park
2. Install a chemical toilet waste disposal point in Maer Road car park – connected directly to the sewerage network
3. Install a fresh water tap in Maer Road car park
4. Reduce the maximum permitted number of consecutive overnight stays to 2 nights, with no return within 72 hours.
5. Improve the signage stating the rules and restrictions for overnight stays within both car parks – including ground markings along Queen's Drive Echelon to designate bays suitable for overnight parking, stipulating a safe distance between vehicles.
6. Trial RingGo only payment for overnight parking sessions to prevent vehicles remaining on site for longer than the maximum permitted number of nights
7. Increase the overnight stopover fee to £20.00 (currently £11.00) per night in recognition of the additional costs incurred in managing, maintaining and installing the physical improvements to the overnight parking arrangements.
8. The uplift in charging to be ringfenced to increase enforcement activity.
9. A yearly review to be carried out by the appropriate scrutiny committee.

The Chair thanked Cllr Caygill for his contribution to the meeting.

## **41 Review of Petition Scheme**

The Democratic Services Manager presented this report which set out proposed changes to the Petition Scheme for the Committee's consideration.

Members were invited to comment on the proposed wording, for submission to the Constitution Working Group which would make a final recommendation to a future Council meeting.

The Democratic Services Manager informed the Committee that implementation of the new e-petitions platform was delayed. It had been intended to introduce the platform on the Council's website by 30 May 2025, and the Democratic Services Manager stated that he would provide an updated timeline by email to the Chair, during the week commencing 21 July 2025.

Discussion included the following points:

- The e-petitions platform is an additional offering to members of the public but the Council will continue to accept hard copy petitions.
- Costs for the e-petitions platform are yet to be confirmed.
- In the Democratic Services Manager's experience where authorities have an e-petitions scheme, this has not led to a significant increase in petitions submitted.
- Need to be careful with the wording in the petitions scheme so as not to set a public expectation that the Council will fix an issue over which it has no control.
- At section 3.2 of the scheme which covers Petitions for Council Debate, consider setting the signatures threshold at a percentage of the population rather than a fixed number, given the chances of getting 1,500 signatures in a village will be quite slim, relative to a town.
- Review whether section 3.3 is needed, in relation to petitions calling for Council employees to give evidence at any meeting of the Overview and Scrutiny Committees.

- In reference to section 5.12 concerning petitions which the Monitoring Officer may decline to accept, it would be appropriate for this to be subject to Member oversight, in the interests of transparency.
- Consider setting out in the Petitions Scheme what this Council does not do, given that people often do not know what individual councils do.

## 42 **Animal Licensing and Enforcement Policies**

The Assistant Director – Environmental Health presented this report which proposed service-specific policies relating to Animal Licensing and Animal Enforcement, to ensure a consistent and effective approach to animal related enforcement.

In discussion, it was suggested to put out communications to promote awareness of the policies among the general public.

### **RECOMMENDED to Cabinet:**

1. To formally adopt the draft Animal Enforcement Policy
2. To formally adopt the draft Animal Licensing Policy

## 43 **Work programme 2025 - 2026**

Members received and noted the Overview Committee's Work Programme for 2025-2026.

Having reviewed the Cabinet Forward Plan, the Chair suggested adding the Public Spaces Protection Orders consultation to the Committee's work programme, for a future meeting.

Members also considered a proposal form submitted by Cllr Geoff Jung concerning beach hut arrangements and charging review of current agreed policy. It was agreed to add this item to the Committee's work programme, for scoping work to be undertaken.

### **Attendance List**

#### **Councillors present:**

B Collins  
R Collins  
T Dumper (Vice-Chair)  
P Fernley  
A Hall (Chair)  
M Hall  
Y Levine  
D Mackinder  
D Wilson

#### **Councillors also present (for some or all the meeting)**

P Faithfull  
S Gazzard  
G Jung

#### **Officers in attendance:**

Matthew Blythe, Assistant Director Environmental Health

Simon Davey, Director of Finance  
Richard Easthope, Parking Services Manager  
Sarah James, Democratic Services Officer  
Andrew Melhuish, Democratic Services Manager

**Representatives of Exmouth Town Council in attendance:**

Cllr Fred Caygill, Chair of the Exmouth Motorhomes Task and Finish Forum

**Councillor apologies:**

A Bailey  
B Bailey  
D Haggerty  
M Hartnell  
J Heath

Chairman .....

Date: .....

Report to: Overview Committee

Date of Meeting 30<sup>th</sup> September 2025

Document classification: Part A Public Document

Exemption applied: None

Review date for release N/A



## Blackdown Hills National Landscape annual review 2024/25

### Report summary:

Blackdown Hills National Landscape to present their 2024/25 Annual Review to Overview Committee and update on progress being made with reviewing their Management Plan 2025 – 2030. It is an opportunity for Overview Committee to understand the work programmes and activities that have been carried out by the Blackdown Hills National Landscape team over the last 12 months and also to hear about the plans for 2025/26 and how they align with the Council's own priorities for the environment. The team is hosted by Devon County Council, with East Devon DC (along with Mid Devon DC and Somerset Council) as key match funding partners, alongside Defra.

### Is the proposed decision in accordance with:

Budget Yes ☒ No ☐

Policy Framework Yes ☒ No ☐

### Recommendation:

That Overview Committee note the Blackdown Hills National Landscape Annual Review report 2024/25 and update on the Management Plan Review 2025-2030.

### Reason for recommendation:

To enable the Annual Review 2024/25 to be presented to Overview Committee for noting and receive an update on the review work being progressed with the Blackdown Hills National Landscape Management Plan 2025 – 2030.

Officer: Tim Youngs, Blackdown Hills National Landscape Manager; [tim.youngs@devon.gov.uk](mailto:tim.youngs@devon.gov.uk)  
Charlie Plowden, Assistant Director – Countryside, Environment & Ecology;  
[cplowden@eastdevon.gov.uk](mailto:cplowden@eastdevon.gov.uk)

### Portfolio(s) (check which apply):

- ☐ Climate Action and Emergency Response
- ☒ Coast, Country and Environment
- ☐ Council and Corporate Co-ordination
- ☐ Communications and Democracy
- ☐ Economy
- ☐ Finance and Assets
- ☐ Strategic Planning
- ☐ Sustainable Homes and Communities
- ☐ Culture, Leisure, Sport and Tourism



**Equalities impact** Low Impact

**Climate change** Low Impact

**Risk:** Low Risk;

**Links to background information** [Blackdown Hills National Landscape Annual Review 2024-25 Background Report](#)

**Link to** [Council Plan](#)

Priorities (check which apply)

- ☐ A supported and engaged community
  - ☒ Carbon neutrality and ecological recovery
  - ☐ Resilient economy that supports local business
  - ☐ Financially secure and improving quality of services
- 

## **Report in full**

### **1. Blackdown Hills National Landscape (BHNL) Team**

- 1.1 BDNL has continued to grow over the last year. Large externally programmes, namely Connecting the Culm and the Triple Axe project continue to develop, with new projects starting as a result of increased funder/ stakeholder interest. Such projects are very much partnerships, run in conjunction with EDNL and Dorset NL in the case of Triple Axe. The current chair is Cllr Bob Nelson (Broadhembury parish council).
- 1.2 The team continue to advise on planning applications (via Lisa Turner, Planning Officer) as well as deliver the Farming in Protected Landscapes (FiPL) programme, alongside other more core activity.

### **2. Blackdown Hills National Landscape finances**

- 2.1 The BHNL total combined budget for the 2024/25 year totalled £1,595,000. Of this, £1,242,000 was project specific, the remainder £353,000 comprised of a majority Defra core grant and Local Authority match contributions with East Devon District Council contributing £9,510
- 2.2 The BHNL Partnership have allocated all available funds including rolling over £36,000 into delivering projects during 2025/26 which will help support the reduction in DEFRA core finding for this period The BHNL Partnership indicative core budget for 2025/26 is £250,000 which represents a reduction of £103,000 on last year due to the Capital Uplift being reallocated to the Capital 30x30 project fund However the project budget for 2025/26 is anticipated to be £2,240,000

### **3. Blackdown Hills National Landscape projects**

- 3.1 Through the BHNL Project Fund, the Partnership have allocated and committed £80,000 which supported a diverse range of 16 projects across the National Landscape and the Annual Review 2024/25 highlights more on this area of activity. However, as a “snapshot” of these projects, they have included a festival of heritage, purchase of a hybrid taxi cab for charitable use, compost toilets for a Community Interest Company (CiC) in Awliscombe, establishing a Network Support Group and contributing to the Culm Crayfish project.
- 3.2 The Blackdown Hills Farmers Group delivered 9 events this year to a group of over 130 landowners and land managers. Events included slurry management, public events on farms, bracken management water quality and citizen science, soil health and carbon, river

restoration and introduction to the new Sustainable Farming Incentive & Agri environment schemes. 2025/26 is the last funded year of the programme and we are already researching how this valuable project can be funded to continue into the future.

- 3.3 The Blackdown Hills National Landscape Festival of Heritage was a great success, with strong attendance and delivered seven free-to-attend events, each focusing on different historical periods and set in a variety of locations. These events were designed to engage diverse audiences and included the events such as Archaeological Finds Day (Chardstock Community Hall), Tombs, Headstones and Graveyards of the Blackdown Hills (Blackdown Healthy Living Centre), RAF Upottery Airfield Guided Tour and Pop-up Heritage Stall: Crafts and Stories for Young Families (Thelma Hulbert Gallery)
- 3.4 Through the BHNL Access for All programme, the team committed and spent £54,462 which supported 6 projects. The projects included installation of a double electric charging point in Hemyock, supporting the creation of Nature Connection group, developing the new website to be fully accessible and the resurfacing and creation of disabled spaces at the Otterhead carpark along with new information boards. .
- 3.5 This year the BHNL Partnership were accepted as a 'spoke' for the National 'Nature Calling' project led by the National Landscapes Association. The BHNL Partnership as a spoke has enabled a collaboration with East Devon National Landscape, Dementia Friendly Honiton Group and Honiton Community College to deliver a series of events throughout Spring/Summer 2025. Final details of this programme are still being worked out, but it will be a spectacular artistic initiative.
- 3.6 Funding of £4150 was secured for a National Landscape Association led project called Generation Green 2 which in total delivered more than 41,500 day and overnight nature connection experiences to young people who would otherwise be the least likely demographic in the country to spend time in the nation's most beautiful landscapes. We are one of eight National Landscapes to have bid for funding and delivered 30 spaces for Devons Young Carers with three sessions at Wildside, a nature connection and outdoor activity space in Madford, along with 20 places for overnight stays however due to time limitations were given permission to support Magdalen Farm (a close partner on Axe projects) within the Dorset National Landscape to deliver these stays.
- 3.7 It has been another hugely successful year for BHNL Farming in Protected Landscapes programme. In total the BHNL Partnership supported 63 projects worth a combined £526,039. With £407,305 originally allocated and a further successful bid for additional funding securing £118,734 The BHNL Annual Review 2024/25 provides a summary of the projects delivered.

#### **4. Wider Strategic Initiatives**

- 4.1 As ever, the Blackdown Hills National Landscape team is involved in a wide range of regional and local partnerships. The team sit on many of these groups as part of the core steering group and are partners on some of them.
- 4.2 A new project for this year is Rivers Run Through Us, a partnership between Blackdown Hills, East Devon National Landscape, Dorset National Landscape and the Environment Agency. The new project team has been recruited, and the project aim is to restore natural heritage of the Axe through focussing on 3 key strategic themes: River, Soil and People. The work programme has just started for this project.

#### **5. Management Plan 2025-2030**

5.1 The BHNL Partnership have secured adoption of the Management Plan from all Local Authorities over the summer, underpinned by detailed evidence gathering, publication of a State of the BHNL report and comprehensive stakeholder engagement. The Management Plan will be published on the BHNL website.

## **6. Planning and Consultation**

6.1 The BHNL team continues to advise the Local Authorities on planning matters by responding to consultations on applications, input into pre-application advice where appropriate, and contributing to formal and informal local plan consultations.

---

### **Financial implications:**

There are no direct financial implications arising from the report

### **Legal implications:**

There are no substantive legal issues to be added to the report



**Blackdown  
Hills**  
National  
Landscape

## Blackdown Hills National Landscape- Annual Review 2024/25

### 1. Staffing

Blackdown Hills National Landscape team		Connecting the Culm Project		Farming in Protected Landscapes (FiPL)	
TY	Tim Youngs (1 FTE)	TY	Project Director	AT	Amy Taverner FiPL Trainee- new post (0.8 FTE)
LT	Lisa Turner (1 FTE)			DW	Di Weeks (0.4 FTE) Admin
				PY & ES	<i>Pete Youngman and Eli Sherlock, FiPL Officer - contractors</i>
CG	Clare Groom (0.6 FTE officer)	Culm Catchment Officers		<i>All fixed term positions- up to end of March 2026 (admin) and March 2027 (Officer)</i>	
HM	Hannah Metson (0.8 FTE) Project Development & Delivery Officer	LJ	Lucy Jefferson (0.8 FTE), fixed term to March '27 (Senior Officer, funded by DRIP)	Rivers Run Through Us (NLHF)  Development Manager: Jane Robertson- JR (1 FTE up to 31 July 2026)  Development Ranger: Emily Hobson-Martin (E H-M) (0.8 FTE)	
DW	Di Weeks Senior Admin & Funding Officer (1.0 FTE – split across supporting DRIP & FiPL)	JH	John Hickey (0.8 FTE), fixed term until March '27 (Officer, funded by Grant in Aid)		

## 2. Financial summary

The Blackdown Hills National Landscape total combined budget for the 2024/25 year totalled £1,595,000. Of this, £1,168,000 was project specific, the remainder £427,000 comprised of a majority Defra core grant and Local Authority match contributions, with East Devon District Council contributing £9,510 (demonstrating a significant multiplier effect).

## 3. National Landscape Management Plan review

A draft Management Plan was subject to an 8-week public consultation from 21 January to 19 March 2025. The consultation was promoted on the Blackdown Hills website and e-newsletter, and directly to partnership organisations, parish councils, surrounding town councils and all councillors (district and county) covering the Blackdown Hills geographic area. 25 representations were received, with six of those from parish councils and six from local residents. Respondents were generally supportive of the plan's vision and made helpful comments or sought the inclusion of additional information rather than raise significant concerns. Supporting documents include SEA screening report, HRA screening report, Equalities impact assessment, and Engagement and consultation report.

## 4. Highlight report

### a) Place

Planning and development:

*Planning casework-* in 2024/25 a total of 168 planning applications were dealt with (via the agreed planning protocol with Local Authorities). Of these, substantive comments were provided (to Planning Officers) for 55 of these.

Nine consultations from National Grid Electricity Distribution have also been dealt with and 2 from Forestry Commission for felling licence applications.

*Planning policy-* comments were submitted in response to the East Devon Local Plan Regulation 19 Consultation. Our response focused on the chapter *Development in the Towns and Villages*, and the premise that the overall approach to allocations does not adequately address the duty to seek to further the conservation and enhancement of the National Landscape. Other comments were made in relation to the *High Quality Design* chapter.

### b) People

Projects delivered included the **purchase of a hybrid vehicle** for the Blackdown Hills Healthy Living Centre and for wider use for registered community and charity groups. This is designed to help tackle the (evidenced) barrier of lack of transport for some under-served groups.



Nature Calling – arts programme:

Started in 2024, in 2025 [Nature Calling](#) is bringing together the 34 National Landscapes in England, local arts organisations and community groups from within a 30-minute journey time of their nearby National Landscape in an ambitious new national arts programme.

As part of this project, we are working on a joint activity with East Devon National Landscape. Honiton College and Dementia Friendly Honiton will be project partners, with groups from these organisations taking part. Thelma Hulbert Gallery are also supporting us with the project. We put out a [call for artists](#) to work with these groups.

The Blackdown Hills National Landscape **Festival of Heritage** was a great success, with strong attendance across most events and overwhelmingly positive feedback from participants.

Heritage Arts People (HAP) was commissioned to create the festival and organised seven free-to-attend events, each focusing on different historical periods and set in a variety of locations. These events were designed to engage diverse audiences.

- Archaeological Finds Day (Chardstock Community Hall)
- Tombs, Headstones and Graveyards of the Blackdown Hills (Blackdown Healthy Living Centre)
- RAF Upottery Airfield Guided Tour
- Mills of the River Culm Walking Tour (Coldharbour Mill)
- Pop-up Heritage Stall: Crafts and Stories for Young Families (Thelma Hulbert Gallery)
- Tours of St Thomas' Church, Thurlbear
- Dunkeswell Abbey tours

c) Nature

Enhancing the Hills (funded through Landscape Enhancement Initiative- LEI):

This project has supported relatively small-scale landscape enhancements on six holdings in the vicinity of the **National Grid** (funder) power line over the past five years, resulting in;

- 225m of new hedgerow planted.
- 650m old hedgerow restored.
- 6+ new hedgerow trees planted.
- 1.2ha orchard restoration.
- 4+ in-field trees planted.
- 5.2 ha meadow creation and improvement, including methodology survey and reporting.

d) Climate

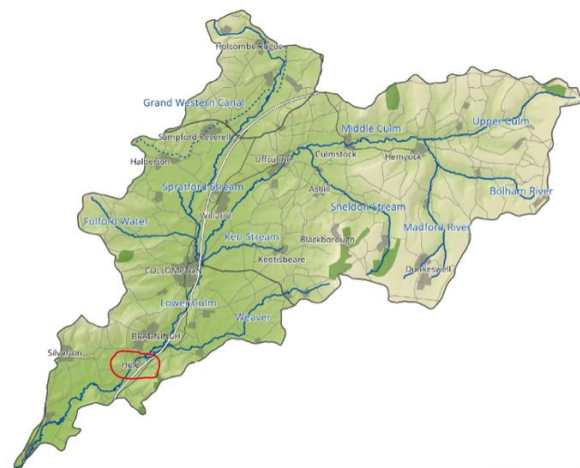
**The Connecting the Culm** project continues to go from strength to strength, via four elements at the present time:

- National Highways Designated Fund- feasibility stage (£100k)- completed. The Detailed Design phase (£150k) will run for the rest of this FY. Implementation is costed at £997k. This project will focus on three failing outfalls from the M5 motorway (NT Killerton and Mountstephen/ Little Turberfield near Tiverton Parkway) plus wider catchment water quality and biodiversity work.



- Devon Resilience Innovative Project (DRIP)- £640k. Runs until March 2027. Lucy Jefferson is the Senior Culm Catchment Officer, funded via this project 3 days/week. Delivery of nature based solutions is on track.
- Flood Defence Grant in Aid (GiA)- £450k. The new GiA Officer, John Hickey, started in December 2024, 0.8 FTE. Lucy Jefferson is employed 1 day/week to support/ manage.
- Network Rail- following a site visit on 17<sup>th</sup> December 2024, Network Rail have committed £80k to the Connecting the Culm project, to undertake a concept/ optioneering design phase this FY, that will lead to an Outline, Detailed Design and Implementation phase.

## Floodplain Reconnection for Railway Resilience (FlooR<sup>3</sup>)



[connectingtheculm.com](http://connectingtheculm.com)  
[tim.youngs@devon.gov.uk](mailto:tim.youngs@devon.gov.uk)



Hele crossing in flood (November 2012)



Floodplain restoration at scale example - credit: National Trust, Killerton

A **Soil Carbon Guidance Tool** for farmers and landowners in the Blackdown Hills is available on our website [a-guide-to-soils-and-carbon-low-res.pdf](#). This results from three years of work by Fred Constantine-Smith and Gavin Saunders, funded through FiPL, and supported by Richard Smith at the Environment Agency, to develop a comprehensive picture of how soil carbon storage and capacity varies between different soil types across the National Landscape, building on previous work by Cranfield. The purpose of the work is to equip land managers to take advantage of future funding schemes and green finance, to retain and increase the carbon stored in Blackdown Hills soils, by targeting efforts to those soils and management practices which will yield the best results. Such an approach will increase carbon sequestration in line with healthy soil management for sustainable agriculture, and habitat management/restoration for biodiversity.



## 5. Cross-cutting projects

### a) Triple Axe Project (Farming, Nature & People):

The 'Triple Axe' catchment project, which covers the whole Axe catchment across parts of South Somerset, East Devon and West Dorset, including parts of the Blackdown Hills, East Devon and Dorset National Landscapes, has consolidated its governance arrangements with a new steering group and partnership forum, to promote coordination and collaboration between the many initiatives taking place in the Axe catchment. Led primarily by the EA and the Blackdown Hills National Landscape, the three strands of activity have progressed as follows:

*Farming:* Taking the learning from 14 Farm Resilience Plans (FRPs) produced to date, in 24/25 the activity will consist of a programme offered to 20 farmers/ year) that provides no-cost soil/ silage/ slurry surveying (for phosphate) and a series of workshops, involving specialist agronomic farm advisers (funded through Farming in Protected Landscapes- FiPL). The work is being funded through WEIF (Water Environment Improvement Fund).

*Nature:* Phase one has been partially completed to provide river channel restoration and flood plain reconnection works on a stretch of the River Yarty, building on the experience from similar recent work on the upper Axe. This has been funded through WEIF.

A feasibility and detailed design study is being funded by FiPL to create a holistic 'river reach' plan which will be used to support additional funding opportunities such as LEI funding.



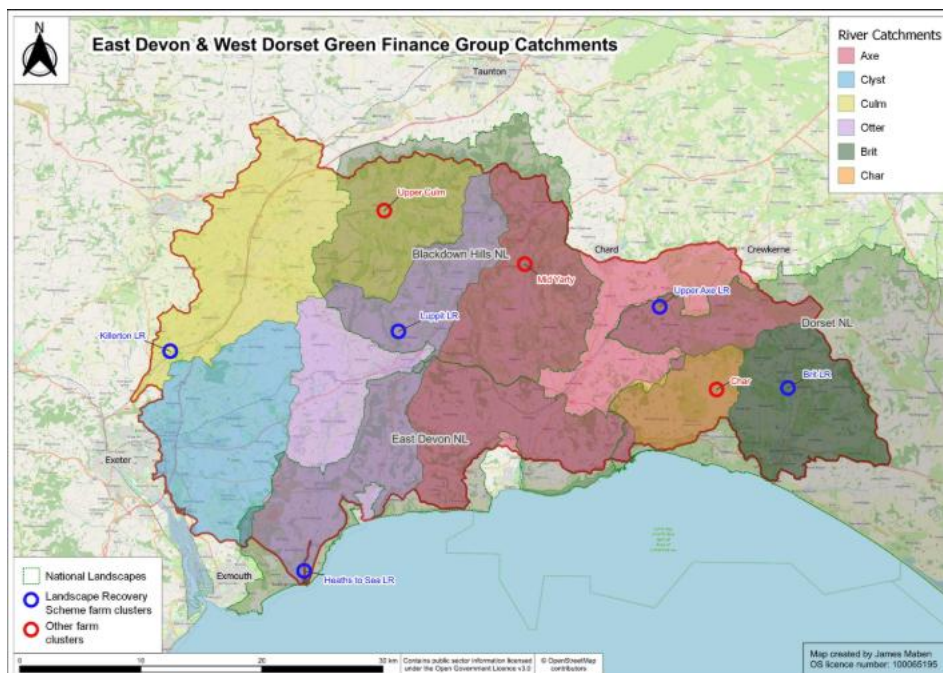
*Yarty - Restored section, in flood*

*People:* An innovative Integrated Monitoring Plan (IMP) is being spearheaded by the Chardstock Eco Group, to continue their pioneering community-based work.

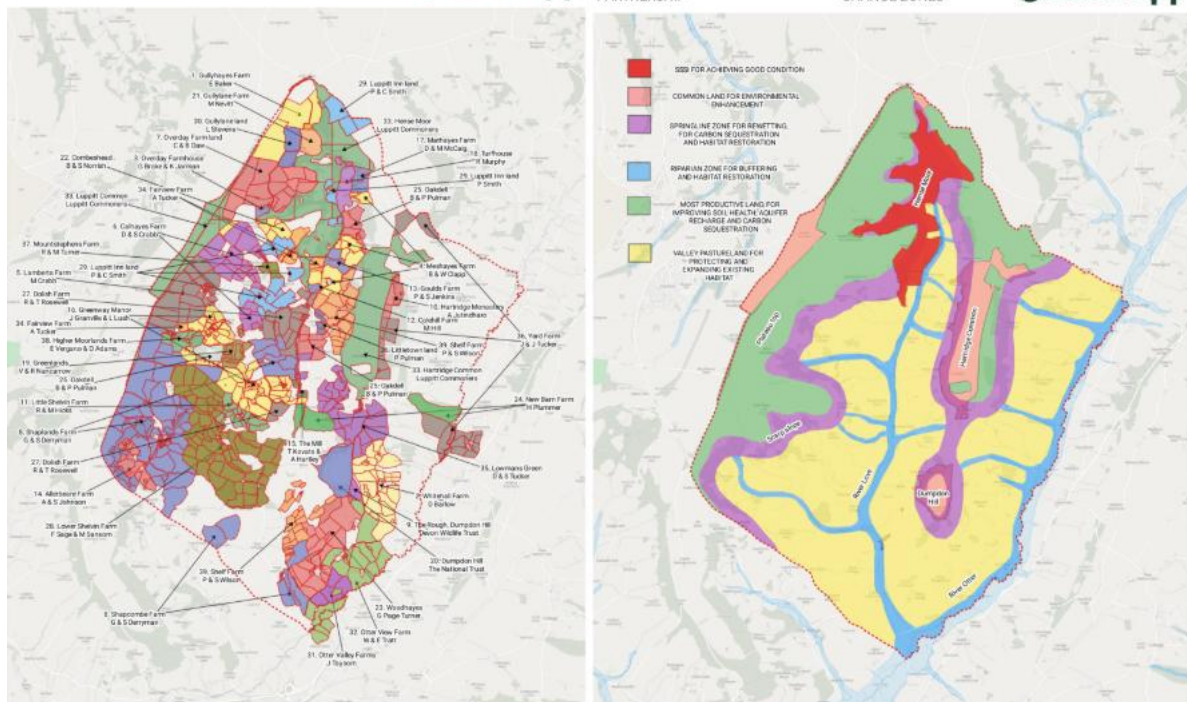
Rivers Run Through Us project (funded by National Lottery Heritage Fund):

Builds on community activity to date in the Axe catchment to provide support for local communities to become involved in understanding their local river environment and contributing to addressing the issues it faces. The 18 month Development phase has started and if a Delivery phase application is successful, it will run for a further five years.

- b) A successful **NEIRF 3** project was awarded £100k via the National Landscapes Association, on behalf of the East Devon & West Dorset Green Finance Group. The project started in October 2024, with strong progress being made on four work packages, via 3 consultants. Runs for 18 months.



- c) **Landscape Recovery** –The established entity called Luppitt Landscape Partnership is now in its 2-year development phase of the project, managed by Gavin Saunders (supported by Nicola Cunningham). The Blackdown Hills National Landscape are supporting partners, e.g. via Farming in Protected Landscapes.



- d) The **Farming in Protected Landscapes (FiPL)** programme has been extended to a fourth year ending in March 2025. By the end of March 2024 we delivered 94 projects totalling £645,000, since the onset of the programme in July 2021.

Despite the challenge of a much-enlarged budget in 2024-25 (£407K), the Local Assessment Panel and FiPL team have succeeded in committing £388k to date. A diverse range of projects are being delivered with plenty of new interest having been generated this year, (current remaining balance in the pipeline is £5k).

The team have successfully bid on an additional £107k of extra funding:

- Historic buildings grant – successful bid £10.5k
- Access grant – successful bid £86k
- Additional national pot - successful bid £10k

The Local Assessment Panel continues to be chaired by Sam Parris (farmer, Blackhayes Farm, Stockland).

We have been allocated funding by Defra to extend the FiPL team contracts by 6 months (Admin) and 2 years (Officer/s).

Report to: Overview Committee

Date of Meeting 30 Sept 2025

Document classification: Part A Public Document

Exemption applied: None

Review date for release N/A



## East Devon Public Spaces Protection Orders Approval Review

### Report summary:

A Public Space Protection Order (PSPO) is a tool under the Anti-Social Behaviour, Crime and Policing Act 2014 which is intended to deal with a particular nuisance or problem affecting a specified area that is detrimental to the local community's way of life. PSPOs remain in place for maximum of three years after which they expire unless they are extended to prevent occurrence or recurrence of the activities covered.

The Council currently has three PSPOs in place covering dog control, seashores and promenades and anti-social behaviour dating back to 2023. The Council has carried out a review of these PSPOs to ensure that the three-year review period is met and to assess if the controls are still required and if so whether they need to be amended. This included public consultation. It is recommended that the evidence supports the ongoing use of PSPOs but changes to existing controls require three new orders.

Is the proposed decision in accordance with:

Budget Yes ☒ No ☐

Policy Framework Yes ☒ No ☐

### Recommendation:

1. To recommend to Cabinet that the evidence supports the ongoing need for public space protection orders in relation to the control of dogs, seashores and promenades and anti-social behaviour and consumption of intoxicating substances.
2. To recommend that Cabinet discharge the three Public Spaces Protection Orders from 2023.
3. To recommend that Cabinet approves three new East Devon Public Spaces Protection Orders for 2026 as attached to this report.

### Reason for recommendation:

To ensure that the issues and controls covered in the 2023 Public Space Protection Orders are reasonable and effective and to ensure that the public protection that they provide continues beyond March 2026.

Officer: Sally Webster, Principal EHO 01395519973 [swebster@eastdevon.gov.uk](mailto:swebster@eastdevon.gov.uk)

Portfolio(s) (check which apply):

- ☐ Assets and Economy  
☐ Communications and Democracy



- ☐ Council, Corporate and External Engagement
- ☐ Culture, Leisure, Sport and Tourism
- ☐ Environment - Nature and Climate
- ☒ Environment - Operational
- ☐ Finance
- ☐ Place, Infrastructure and Strategic Planning
- ☐ Sustainable Homes and Communities

### **Equalities impact** Low Impact

The consultation is a requirement of the Act and is necessary in order to create the required orders. Failure to complete this process will mean that previously held powers will be removed when the current PSPOs reach three years. There is a risk that any decisions made can be formally challenged so the decision making process must be robust and based on sound evidence. Dog control PSPOs can impact on service dogs but these have been exempted from the relevant controls.

### **Climate change** Low Impact

**Risk:** Medium Risk; The consultation is a requirement of the Act and is necessary in order to create the required orders. Failure to complete this process and agree new PSPOs will mean that previously held powers will be removed when the current PSPOs reach three years in May 2026. There is a risk that any decisions made can be formally challenged.

### **Links to background information** Anti-Social Behaviour Crime and Policing Act 2014

<http://www.legislation.gov.uk/ukpga/2014/12/contents/enacted/data.htm> Home Office Statutory Guidance on the Act July 2014

[https://www.gov.uk/government/uploads/system/uploads/attachment\\_data/file/352562/ASB\\_Guidance\\_v8\\_July2014\\_final\\_2\\_.pdf](https://www.gov.uk/government/uploads/system/uploads/attachment_data/file/352562/ASB_Guidance_v8_July2014_final_2_.pdf)

### **Link to [Council Plan](#)**

Priorities (check which apply)

- ☒ A supported and engaged community
- ☐ Carbon neutrality and ecological recovery
- ☒ Resilient economy that supports local business
- ☒ Financially secure and improving quality of services

---

### **Report in full**

1. A Public Space Protection Order (PSPO) is a tool under the Anti-Social Behaviour, Crime and Policing Act 2014 which is intended to deal with a particular nuisance or problem affecting a specified area that is detrimental to the local community's way of life. They could be used for a wide range of problems. The area may be as small as a play park or as large as the district of the local authority.
2. A PSPO can be made by the council if it is satisfied on reasonable grounds that the activities carried out, or likely to be carried out, in a public space:
  - Have had, or are likely to have, a detrimental effect on the quality of life of those in the locality;

And that the effect or likely effect of the activities:

- Is or is likely to be persistent or continuing in nature;
- Is or is likely to be unreasonable and

- Justifies the restrictions imposed.
3. A Public Space Protection Order is in place for maximum of three years. After the three-year period, the Order expires, or it can be extended to prevent occurrence or recurrence of the activities. The Order can also be varied by increasing or reducing the restricted area, or by altering or removing prohibitions or requirements, or adding a new requirement.
  4. East Devon District Council currently has three PSPOs. The [current PSPOs](#) cover:
    - Control of Dogs Varied Order 2024 – a requirement to clear up dog faeces, requirement for dogs to be kept on a lead less than 1 metre in length when on a public road or pavement adjacent to roads, requirement for dogs to be kept on a lead when asked by an authorised officer, requirement to walk no more than six dogs at any one time and a requirement for dogs on leads or dog exclusion in specified places.
    - Control on Seashores and Promenades Order 2023 – seasonal dog exclusions on East Devon town beaches, requirement for dog on leads in specified places including promenades and prohibition of feeding of seagulls on town beaches and promenades.
    - The Control of Anti-Social Behaviour and the Consumption of Intoxicating Substances (Exmouth) Order 2023 – a requirement to surrender alcohol when requested by an authorised officer, urination or defecation in a public place, aggressive requests for money, and intimidation, harassment or distress.
  5. PSPOs are time limited to three years. The Control of Dogs Varied Order 2024 is due to expire in December 2027 and the Control on Seashores and Promenades Order and the Control of Anti-Social Behaviour and the Consumption of Intoxicating Substances Order is due to expire in March 2026.
  6. A person observed not to be complying with the PSPO is liable to receive a fixed penalty notice of £100. This can be issued by an authorised Council officer or police officer.
  7. Any proposed changes to each Order require a full public consultation. Existing requirements also went through the public consultation process.
    - In July 2024, Town and Parish Councils were contacted and invited to put forward requests to change the current PSPOs. Requests were received as a result of particular area issues, or as a result of newly built recreational areas in new residential developments e.g. Tithebarn.
    - In July, August and September 2024 members of the public could also put forward requests to change the current PSPOs via the Council website.
    - In August 2024 there was internal consultation with Officers from different departments across the Council including StreetScene, Dog Enforcement Officer and Julie Owen from Devon Loves Dogs.
    - The public consultation took place over an eight-week period from 3 March to 28 April 2025. The consultation took place on the Council's online community engagement hub, 'Commonplace' and paper copies were provided to members of the public upon request.
    - Respondents could provide their views on the existing controls stated in all three Orders and on proposed changes to the Orders.
    - The public consultation was advertised on the Council's social media forums and resident's newsletters, and there was also a press release. Statutory consultees were notified in writing to make them aware of the consultation. Statutory consultees included Town and Parish Councils, Devon County Council, Chief Officer of Police, Local Policing body, Police and Crime Commissioner, and affected landowners and community representatives.
    - A total of 1646 responses were received during the consultation period.

8. Based on the consultation responses a number of changes to the existing PSPOs are proposed. Tables of proposed changes with their justification are included in Appendices 1, 2 & 3. A brief summary is given below.

**9. The Control of Dogs Order.**

- a) The Council are proposing to make changes to the groups of people exempt from being guilty of an offence under the Order. This includes people who rely upon a dog trained by any prescribed charity such as Dogs for the Disabled, police or fire dogs, Law Enforcement, Search and Rescue, HM Armed Forces and agricultural activities.
- b) The Council received requests from Broadclyst Parish Council and Cranbrook Town Council for new dog controls on children's play areas and recreational spaces, such as allotments in newly built residential areas in Cranbrook, Westclyst and Tithebarn.
- c) The Council's Dog Enforcement Officer has received complaints about dog fouling at Donkey Field and the Maer in Exmouth. New dog on lead requirements within these areas were consulted on.
- d) The current Dog Control PSPO includes dog on lead requirements at twenty footpaths across Honiton. Other towns across East Devon do not have these types of restrictions. Removal of these dog on lead requirements were consulted on.
- e) The current Dog Control PSPO was formally varied in December 2024 following a public consultation for the inclusion of dog on lead requirements at Kilminster Recreation Ground. This was supported by Kilminster Parish Council, Kilminster Cricket Club, Kilminster Primary School, Playing Fields Committee of the Arthur Hitchcock Charity due to concerns about dog fouling and dogs approaching children. Some dog owners raised concern about lack of alternative dog walking facilities in the locality. Kilminster Dog Walkers Association proposed that the dog on lead requirement should be removed and a new dog exclusion requirement between 10am and 6pm from 1 May to 30 September is applied. This proposal was therefore consulted on.
- f) The Council's Dog Enforcement Officer has received complaints about nuisance dogs at the Byes in Sidmouth, for example, incidents where people have been knocked over by dogs. There have been concerns about dogs colliding with other path users including cyclists. The Council has also received complaints about dogs fouling and running over graves at Sidmouth Cemetery, Temple Street. New dog on lead requirements within these areas were consulted on.
- g) During the consultation period, Clyst Honiton Parish Clerk requested that dog exclusion requirement for Clyst Honiton play park is extended to whole field. The play park equipment is no longer enclosed within a barrier inside the field and the existing signage is on the entrance to the whole field.

**10. The Control on Seashores and Promenades Order.**

- a) During the summer of 2024, the Council received several requests to change the seasonal dog exclusion area at Exmouth beach which would enable dog walkers to exercise their dogs across the whole beach during the early morning and later evening when the beaches are quieter.

Time limits apply on beaches within Cornwall. Feedback from Cornwall Council has indicated that they received fewer complaints concerning dog nuisance and fouling on the beaches and dogs being on the beach during the banned times. They also commented that they were able to target their limited resources in hot spot areas based on local intelligence and this enabled more successful enforcement. The timed exclusion is not considered likely to have a negative impact on the Blue Flag status as the time dogs will be accessing the beach has been reduced, enforcement will be more targeted and effective and we are aware of Cornwall Councils beaches with timed dog control not being adversely affected in their Blue Flag applications.

Applying the seasonal dog exclusion area between 10.00 and 18.00 at Exmouth beach was therefore consulted on.

- b) The Council has received a request [from Councillor John Heath] to include a new seasonal dog on lead requirement on the eastern section of the beach whilst maintaining the seasonal dog exclusion requirement on the western section of the beach.

#### **11. The Control of Anti-Social Behaviour and Consumption of Intoxicating Substances in Exmouth Order.**

- a) The Order covers a number of designated streets and public open spaces in Exmouth. The renewal of the Order will enable measures to control and restrict certain activities, in particular the consumption of psychoactive substances, consumption of alcohol in public (other than in licensed premises), anti-social behaviour of groups or by an individual, aggressive begging, and urination (other than in public toilets). The Council continues to receive reports of ASB within the town and this is supported with the Police data and the rationale for securing funding from the OPCC for the ASB Hotspot patrolling. By having the PSPO in place we are able to effectively tackle ASB which can have a detrimental impact on the community and improve the quality of those areas affected.
- b) We will consider the impact on rough sleepers and ensure a proportionate and graduated approach to enforcement.

#### **12. Timetable for decision:**

03/03/25 – 28/04/25	Public Consultation period
28/04/25 – 13/05/2025	Review of Public Consultation responses
	Legal Services instructed to review drafts and amend as necessary
12/08/2025	Report to Democratic Services for inclusion into Cabinet meeting on 03/09/2025
30/09/2025	Overview Committee meeting to review and recommend approach to Cabinet. Cabinet meeting to ratify and sign off final PSPO's Legal Services instructed to seal and sign PSPOs
03/2026	Discharge of 2023/24 PSPOs. Implementation of 2026 PSPOs

### **Regulatory Impacts**

- 13. The proposed 2026 PSPOs do not add significant regulatory burdens compared to the 2023 PSPOs. If the proposed move to time limited access to Exmouth beach (rather than area based) is approved this should make enforcement easier. However, it should be considered that by continuing to deliver PSPOs there is an expectation that they are enforced appropriately. The recently approved Animal Enforcement Policy supports the enforcement of the dog and seashore PSPOs.

### **Conclusion**



14. The evidence collected supports the Council in continuing with the controls provided by Public Space Protection Orders covering:
- a. Dog control
  - b. Seashores and Promenades
  - c. Anti-social behaviour and the Consumption of Intoxicating Substances in Exmouth.
15. Evidence has been provided to support changes to existing controls in the 2023 PSPOs which have been reflected in the recommendations for the new 2026 PSPOs.
- 

**Financial implications:**

The are no financial implications within the report

**Legal implications:**

The legal issues are dealt with in the body of the report.

**Appendix 1. Table of Proposed Changes, Consultation Responses and Recommendations for the Control of Dogs PSPO 2026**

Existing requirement	Consultation Response	Public Comments	Officer Comment	Recommendation
A person who is in control of a dog and does not remove their faeces and properly dispose of it when within a public space unless they have reasonable excuse and if the owner, occupier or authority having control of the land has consented, shall be guilty of an offence.	98% of respondents agreed  2% of respondents did not agree	I am a dog owner and always clear up after my dog and expect other people to do the same.  It is never acceptable to not pick up dogs mess. If the person is not capable of doing so, then they should not be in a public space with their dog (maybe with the exception of a blind person). The same applies to not having the dog in a lead and under control.	This is a continuation of the existing requirement of the Dog Control PSPO 2023.	It is recommended that the Cabinet agree to keep the current control remains in place.
A person who is in control of a dog and fails to keep their dog on a lead less than 1 metre in length whilst on a public road or on a pavement adjacent to the road unless they have reasonable excuse, shall be guilty of an offence.	79% of respondents agreed  21% of respondents disagreed	Only being allowed to use a lead less than 1m can be dangerous. I often run with my dog, and a short lead would make it dangerous. I need to be able to use a longer lead.  Finally, many dogs behave worse when on leads. Evidence shows this. Owners should be trusted to decide if it's best for their dog to	This is a continuation of the existing requirement of the Dog Control PSPO 2023.	It is recommended that the Cabinet agree to keep the current control remains in place.

		<p>be on/off lead in common exercise areas to reduce problems.</p> <p>Dogs should not have to be on lead if they are under CLOSE control of a responsible owner</p> <p>dog should be on lead on my opinion due to a lot of incident of out of control animals due to lack of training.</p> <p>For "A person who is in control of a dog and fails to keep their dog on a lead less than 1 metre in length whilst on a public road or on a pavement adjacent to the road unless they have reasonable excuse." 1m is too short. Most standard short leads are 100-120cm</p> <p>I strongly feel that owners shouldn't have to keep dogs on leads unless near roads. There is a lot of beautiful countryside in Devon and walking dogs through it is a wonderful way to see the countryside and exercise your dogs. Keeping them on leads restricts their exercise and opportunity to run and explore</p>		
--	--	--	--	--

<p>A person who is in control of a dog and does not comply with a direction given by an authorised officer of the Council or a Police Officer to put and keep their dog on a lead unless they have a reasonable excuse and if the owner, occupier or authority having control of the land has consented shall be guilty of an offence.</p>	<p>87% of respondents agreed</p> <p>13% of respondents disagreed</p>	<p>There should be more detail on why an authorised person would tell a dog owner to put it on a lead</p> <p>These proposals are not unreasonable</p>	<p>This is a continuation of the existing requirement of the Dog Control PSPO 2023.</p>	<p>It is recommended that the Cabinet agree to keep the current control remains in place.</p>
<p>A person who takes more than 6 dogs onto land unless they have a reasonable excuse and if the owner, occupier or authority having control of the land has consented shall be guilty of an offence.</p>	<p>87% of respondents agreed</p> <p>13% of respondents disagreed</p>	<p>6 dogs is too many for one person to be in charge of.</p> <p>I agree there is a need to limit dogs under the control of a single person but 6 is too much. It needs to be 3 or 4</p>	<p>This is a continuation of the existing requirement of the Dog Control PSPO 2023.</p>	<p>It is recommended that the Cabinet agree to keep the current control remains in place.</p>

<p>A person who is in control of a dog to allow it to enter a dog exclusion area, for example, a children's playpark shall be guilty of an offence</p>	<p>93% of respondents agreed 7% of respondents disagreed</p>	<p>All the changes are reasonable given the significant increase in the number of dogs since 2020 and the increase in owners who are irresponsible. It is unfortunate but necessary to impose new rules better to manage the problems. However, nothing will change without better enforcement which is sadly lacking at the moment. I'm a dog owner.</p> <p>Dogs should be on leads in public playing fields and public open spaces.</p>	<p>This is a continuation of the existing requirement of the Dog Control PSPO 2023.</p>	<p>It is recommended that the Cabinet agree to keep the current control remains in place.</p>
<p>A person who is in control of a dog to not keep it on a lead within a dog on lead area shall be guilty of an offence</p>	<p>77% of respondents agreed 23% of respondents disagreed</p>	<p>Dogs should be on leads in public playing fields and public open spaces.</p> <p>Makes sense</p>	<p>This is a continuation of the existing requirement of the Dog Control PSPO 2023.</p>	<p>It is recommended that the Cabinet agree to keep the current control remains in place.</p>

Proposed change	Justification	Consultation Response	Public Comments	Officer Comment	Recommendation
Amendments to the groups of people exempt from being guilty of an offence including people who are registered blind, people with disability affecting mobility etc, people with a dog trained by prescribed charity, people in charge of a police or fire dog, person in charge of a working dog.	Exemptions for all requirements of the Order have been proposed for particular groups of people.	85% of respondents agreed  15% of respondents disagreed	<p><i>No person in control of an assistant or working dog should be exempt. If they are in control of a highly trained dog they should be able to clear up after it although they may be more likely to have a reasonable excuse.</i></p> <p>This exemption would make the legislation less clear cut and open to abuse. The exemption would open up a difficult debate for those who seek to enforce it. The requirement to look after your dog properly, including having proper control in a public area, should be non-negotiable</p> <p>I do not agree that hunting dogs should be exempt as named above. Hunting (as in similar to fox hunting) is damaging to property and the environment and s</p> <p>(ii) A person with a disability affecting their mobility, manual dexterity, physical coordination or ability to lift, carry or move objects</p> <p>I think consideration needs to be given to the above point. If people with disabilities can't look after a dog properly, which includes collecting faeces, then they should not have a dog in the first place. If they are not picking it up, who will?</p>	A separate Equality Impact Assessment has been completed and forms part of this Cabinet Report.	It is recommended that the Cabinet agreed to the amendments.
New dog exclusion controls at Jubilee Field play park and	Dog exclusion requirements covering the Jubilee Field	55% of respondents agreed	As long as we dog owners can use the rest of the park Apply British Law not "martial law". PSPOs are blanket bans on the majority of responsible dog owners.	This will provide consistency across East	It is recommended that the Cabinet

<p>play space in Axminster.</p>	<p>play park and play space will prevent dogs coming into contact with children.</p>	<p>45% of respondents disagreed</p>	<p>Not an area I'm likely to visit, but surely kids should have priority in a play park?</p> <p>I am not familiar with this area, but I do support dogs on leads in children's play parks</p> <p>Majority of users are dog owners and behave responsibly</p>	<p>Devon in respect of children's play parks/areas.</p>	<p>agree the new controls.</p>
<p>New dog exclusion requirements at Broadclyst</p> <ul style="list-style-type: none"> <li>Tennis Court</li> <li>BMX Track</li> </ul> <p>New dog on lead requirements at Broadclyst</p> <ul style="list-style-type: none"> <li>Allotments</li> </ul>	<p>Dog exclusion requirements covering Broadclyst Tennis Court and BMX Track will prevent dogs coming into contact with people engaging in sport activities.</p> <p>Dog on lead requirements covering the allotments will help to keep</p>	<p>62.5% of respondents agreed</p> <p>37.5% of respondents disagreed</p>	<p>Outside trails and allotments shouldn't be dog on lead zones unless the owner is unable to recall them safely.</p> <p>In play areas yes but not allotments</p>		<p>It is recommended that the Cabinet agree the new controls.</p>

	dogs under control in areas used for food production.				
page 32 Renamed dog exclusion areas at Cranbrook <ul style="list-style-type: none"> <li>• Hayes Square Play Park → Hayes Square Play Space</li> <li>• Ingrams Sports Pitches → Ingrams Sports Centre</li> <li>• Phase 3 Country Park Play Area → Stone</li> </ul>	Cranbrook Town Council have requested that these dog exclusion areas have been renamed.	60% of respondents agreed  40% of respondents disagreed	No public comments		It is recommended that the Cabinet agree the new controls



<p>Meadow Play Space</p> <ul style="list-style-type: none"> <li>Crannaford Allotments Play Area → Crannaford Allotments Play Space</li> </ul> <p>New dog exclusion requirements at Cranbrook</p> <ul style="list-style-type: none"> <li>Platinum Park Play Area</li> <li>Wheeled Sports facility (Skatepark) off Tillhouse Road</li> </ul> <p>New dog on lead requirements at Cranbrook</p>	<p>There is a newly built Play Area and Sports facility at Cranbrook as part of residential expansion.</p> <p>Dog exclusion requirements covering these areas will prevent dogs coming into contact with children and young people.</p>		<p>Dogs should be on leads in public playing fields and public open spaces.</p> <p>In play areas yes but not nature reserve if owner has good control over dog</p> <p>Playparks, skate parks,, etc. should clearly be free from dogs. As for allotments, that decision should rest with the allotment holders rather than the general public, who will normally have no access to them.</p>		
---	---	--	---	--	--

- Access path leading to Wheeled Sports Facility (Skatepark) off Tillhouse Road
- Cranbrook Nature Reserve, Great Meadow area south west of river

Cranbrook Town Council has requested that Cranbrook Nature Reserve is renamed 'Cranbrook Nature Reserve, Great Meadow area south west of river' and is changed from a dog exclusion area

*Cranbrook Nature Reserve is huge and to say you have to keep dogs on leads there is too much of an ask. Its a wonderful space for dogs if the owners are disciplined and considerate and responsible.*

	<p>to a dog on lead area.</p> <p>This will allow the area to be accessed by people with dogs.</p>				
<p>New dog-on-lead requirements in Exmouth</p> <ul style="list-style-type: none"> <li>The Maer</li> <li>Donkey Field in Exmouth</li> </ul>	<p>Dog on lead requirements at The Maer and Donkey Field will help to keep dogs under closer control and prevent dog fouling.</p>	<p>34% of respondents agreed</p> <p>66% of respondents disagreed</p>	<p><i>In eight years we have never seen a problem on the Maer and would strongly object to this being a lead-only area as it would affect many local residents. No harm is being done but is a wonderful facility for dog owners who pay their council taxes; occasional problems with dog waste occur during the summer but this could be addressed by more signage in the parking areas frequented by motorhomes and surfer camper vans.</i></p> <p>So many elderly people use the Maer, on lead in that area will never be adhered to. Although the pollution may put people off!</p> <p>I believe dogs should not have to be on a lead on the Maer recreation ground.</p> <p>The maer or the donkey field at foxholes should not be made into on lead only areas.</p>	<p>The public response is not in favour of requiring dogs on leads and existing anti-social behaviour legislation can be used to manage dog related issues as</p>	<p>It is recommended that the Cabinet does not agree this new requirement for either location.</p>

				reported to the Council.	
Removal of dog-on-lead controls on designated footpaths in Honiton	Removal of dog on lead requirements at designated footpaths will enable consistency with all other towns in East Devon.	50% of respondents agreed  50% of respondents disagreed	<p>All public areas should be dogs on lead only to protect vulnerable people - the old, young, disabled and animal phobic. There should be designated dog exercise areas - where they can be off lead - otherwise on lead.</p> <p>The proposed regulations are too strict, if a dog has been trained well it doesn't need to be on a lead all the time. My dog will heel perfectly and behave as if she of on a lead..</p>	There is no evidence to suggest there is an issue with dogs off lead on designated footpaths in Honiton and this restriction should be removed to ensure a consistent approach across the district. Existing anti-social behaviour legislation can be used to manage dog related issues as reported to the Council	It is recommended that the Cabinet remove the dog-on-lead controls

<p>New dog exclusion rule at Kilmington Recreation Ground between 10am and 6pm from 1 May to 30 September.</p>	<p>Current dog on lead requirements were put in place in December 2024 following a public consultation.</p> <p>Since December 2024, Kilmington Dog Walkers Association have requested that the dog on lead requirement is changed to a dog exclusion requirement between 10am and 6pm from 1 May to 30 September. This will allow dogs to be exercised on</p>	<p>51% of respondents agreed</p> <p>49% of respondents disagreed</p>	<p>Specifically, referring to the Kilmington playing fields it's time to finally put the issue of dogs on the field to rest. During recent years there have been consultations managed by the council which confirmed that dogs must be on leads when on the field - primarily to protect children's health, prevent aggression and reduce mess. There is evidence that this widely consulted and communicated condition is being compromised by a few dog owners. Is it not now time for a simpler, more effective solution and stop all dogs from using the playing field. We live in the countryside, where there is ample space for dog walking without encroaching on a shared recreational area. Maintaining a clear, consistent rule would be in the best interests of all residents. Proposals to open the fields during specific times invalidates all the efforts of past consultations, ignores the health of children, the aggression experienced by some and the mess created.</p> <p><i>I have serious concerns for the children of the village and the pupils of our local Primary school being adversely affected by any change.</i></p> <p><i>When the Dogs on Leads was eventually passed by Council, in 2024, after the omission earlier, the main concern was for the children being afraid of dogs running loose if they came into the field to play. For children to use the actual Play Area they have to go across the field from both of the entrance gate to the Playing Field.</i></p> <p><i>The importance of outdoor play and exercise for young children is paramount in their developments; the children are priority over the dogs running freely at Kilmington Playing Field. Thank you</i></p> <p>Villagers need this space to exercise their dogs safely off lead . The cricket club have taken over this park and people are intimidated by them to not use it . The park belongs to all residents. Previous votes have included non residents. Consultation meetings in the village hall have been unfair and people intimidated and scared to speak out against the dogs on lead issue. A compromise must be allowed</p>	<p>Residents living within the vicinity of Kilmington Recreation Ground were sent a letter to make them aware of the public consultation.</p> <p>Kilmington Primary School do not agree with the proposed change.</p> <p>Kilmington Parish Council do not agree with the proposed change.</p> <p>Kilmington Cricket Club do not agree with the</p>	<p>It is recommended that the Cabinet agree to keep the current controls in place.</p>
--	---	--	--	--	--

	the field outside of these times.		<p>A compromise is the way forward to promote the well being of all ages of residents in Kilmington to enjoy the playing field. There are no alternative areas in Kilmington that the elderly, people with reduced mobility and disabled residents can access safely and exercise their dogs off lead and meet like minded people. This helps with the wellbeing of the elderly residents who enjoy the company of their pet dog and live on their own. It is a lovely green space that should be used by all residents of Kilmington, which was the intention of the Arthur Hitchcock Charity Object.</p> <p>Kind regards *** Personal details have been removed ***</p> <p>Good compromise</p> <p>My concerns are the same as ever, that the use of our village amenities by our school and youngsters will be adversely affected if the Dogs on Leads restrictions are removed. The strong feelings in the last application were that dogs running loose were frightening children and parents, carers and older villagers using the field. This was because due to the circumstances of Covid etc. far more dogs were on the field. In order to get to the Play Area, with its No Dogs restrictions, the children have to cross the Playing Field from the two entrance gates. There is great concern about the health and development of our youngsters being in a very poor state.....restricting their freedom to run, grow and develop easily and enjoy using Kilmington Playing Field will be taken away if the new proposal is implemented. Are the needs of our youngsters being suppressed and overlooked by the attention given to dogs running freely?</p>	proposed change.	
--	---	--	--	---------------------	--

Yvette Turner

yvettenjazz@gmail.com

Mobile: 07894327861

Dear Alice Gill

My name is Yvette Turner and I represent the Kilmington residents dog walking group and 156 signatures from residents of Kilmington.


Evidence to support the compromise.

1. 156 signatures from the residents of Kilmington. The residents were unhappy when the original PSPO with restrictions for dogs on leads was put on Kilmington playing field, May 2023. They were only aware the PSPO had been applied for and approved in April 2023 when it was too late to object. The object of the Arthur Hitchcock Charity Trust is for residents of all ages to enjoy the space and help promote wellbeing and mental health, the compromise is the way forward.
2. Home Office Antisocial Behaviour, Crime and Policing Act 2014, Antisocial behaviour powers, Statutory guidance for frontline professionals, revised in March 2023, page 69. The guidelines have not been taken into account when considering PSPO restrictions on Kilmington Playing field since 2022 when it was first applied for. There are no alternative areas for the elderly, people with reduced mobility and disabled residents to access and safely exercise their dogs off lead.
3. The object of the Arthur Hitchcock Charity Trust states: Facilities for recreation and other leisure times pursuits, with the object of improving the quality of life of inhabitants.
4. The Alfred Hitchcock Charity Trust Trustees emailed EDDC Environmental in October 20222 to request the PSPO. No evidence was presented to support this.
5. Pictures show that playing field use has been dominated by the cricket club. The cricket pitch is fenced off to prevent damage by children and dogs.
6. A log of dog/wild animal faeces has been recorded twice daily April 2023 – March 2025. This clearly shows there has never been a problem with dog fouling as stated by the Trustees of the Arthur Hitchcock Charity Trust when the PSPO was applied for in 2022.

The compromise is the way forward to suit all ages of Kilmington residents. The school and cricket club only use the playing field during the Summer.

Not all outdoor activities that keep people healthy in body and mind are organised sport. Dog walking is carried out 365 days a year in all weathers. There are NO alternative areas in Kilmington to exercise dogs safely off lead that can be ACCESSED SAFELY for elderly, disabled and people with reduced mobility.

Kind Regards



Yvette Turner

On behalf of the Kilmington Dog Walking Group and 156 signatures from the residents of Kilmington

<p>New dog-on-lead requirements in Sidmouth</p> <ul style="list-style-type: none"> <li>• The Byes</li> <li>• Sidmouth Cemetery, Temple Street</li> </ul>	<p>Dog on lead requirements at The Byes and Sidmouth Cemetery will help to keep dogs under closer control, particularly at The Byes which is frequently used by cyclists, and to prevent dog fouling.</p>	<p><b>The Byes</b></p> <p>23% of respondents agreed</p> <p>77% of respondents disagreed</p> <p><b>Sidmouth Cemetery</b></p> <p>90% of respondents agreed</p> <p>10% of respondents disagreed</p>	<p>Sidmouth TC responses:</p> <p>1)The PSPO as proposed for Sidmouth Cemetery be fully supported with additional clear and suitable signage erected to support.</p> <p>2) The PSPO for the Byes be not supported. Members felt that clearer and more appropriate signage should be introduced by EDDC and DCC along the footpaths and shared path/cycleway.</p> <p><i>The Byes- the dogs should be allowed off the leads in The Byes. Most people over the 22 years we have had dogs who have enjoyed their walk on The Byes, have enjoyed their company as some people cannot afford a dog or a bike.</i></p> <p>there are a massive number of dog owners whose dogs do not cause any problems yet you will penalise these people.</p> <p>The rest of the byes is an open area where dogs can safely run off lead and it should be left that way. Its a really valuable asset for people with pushchairs and dogs to walk, and those dog owners with mobility issues, who struggle to walk dogs freely on the coast path and hills</p> <p>Socialising dogs OFF THE LEAD is an important part of training and welfare experience for humans in charge. No extra restrictions are necessary in the "Byes Area".</p> <p>In total agreement especially The Byes which is a very busy area with dogs often not under control and causing a hazard. However my concern is how will this be policed. Area of The Byes which this covers needs to be defined, e.g. does it exclude Gilchrist and Margaret's Meadow.</p> <p>In the cemetery they should be on a lead - respect is required! In the Byes they should be under control.</p>	<p>Existing anti-social behaviour legislation can be used to manage dog related issues as reported to the Council</p>	<p>It is recommended that the Cabinet agree to the new dog on lead requirement for Sidmouth Cemetery only.</p>
--	---	--	---	---	--



			<p>Vision for Sidmouth responded requesting that dogs be on leads within the cemetery.</p> <p>The Byes is a very long-standing general public and dog-walkers free space, bequeathed for the enjoyment of all, where responsible dog owners can allow their dogs to run off lead without annoying or endangering anyone. The freedom to use this space accordingly by the majority of responsible dog owners should not be restricted just because of a minority of irresponsible dog owners who do not know how to control their own dogs. Such poor behaviour can be dealt with already under existing bylaws.</p>		
<p>page 14</p> <p><b>Further requests during consultation:</b></p> <p>Clyst Honiton Parish Clerk has requested that dog exclusion requirement for Clyst Honiton play park is extended to whole field.</p>	<p>Play equipment no longer enclosed in field.</p> <p>Signage already in place suggesting dog exclusion requirements relate to whole field.</p>		<p>The Clyst Honiton PSPO Area is described in the Order as being the play area in the field, which was because it had an enclosed set of play equipment. The new play facilities are now not enclosed within the field, so perhaps the description should relate to the whole field rather than to a non-existent 'play area'. It has always been understood that the Order referred to the field and the EDDC signage is on the gate</p> <p>indicating it relates to the field so it is proposed to bring the PSPO wording in line with practice.</p>	<p>This play area was originally enclosed and excluded dogs. Now there is no enclosure and we would recommend further public consultation for a proposal to exclude dogs from the playing field</p>	<p>Recommend the Cabinet do not agree this change until a further public consultation has taken place.</p>

				or dogs on leads.	
--	--	--	--	----------------------	--

## 2. Table of Proposed Changes, Consultation Responses and Recommendations Control of Seashores and Promenades Order

Existing requirement	Consultation Response	Public Comments	Officer Comment	Recommendation
<p>A person who is in control of a dog and allows it to remain off the lead within a dog on lead area unless they have a reasonable excuse and if the owner, occupier or authority having control of the land has consented shall be guilty of an offence</p>	<p>81% of respondents agreed</p> <p>19% of respondents do not agree</p>	<p>All dogs that are well-trained, safe, and under control should be allowed off-lead, not just those falling into narrowly defined categories. Responsible dog ownership should be the guiding principle, rather than limiting privileges to a select few. Allowing dogs the freedom to exercise and explore off-lead“when it's safe to do so“contributes significantly to their physical and mental well-being. A happy, well-exercised dog is a calmer, safer dog, which benefits both the animal and the wider community</p> <p>No person should be guilty of an offence just for having their dog off-line, the way we re going we will have a community full of restrictions and unhappy angry dogs...</p>	<p>This is a continuation of the existing requirement of the Dog Control PSPO 2023.</p>	<p>It is recommended that the Cabinet agree to keep the current control remains in place</p>

		<p>Fully support these measures but they need an enforcement officer and large visible signage.</p> <p>All dogs should be on leads at all times no exceptions . as a regular beach user in the summer we have come across irresponsible dog owners that let their dog run all over our stuff and urinate on our beach towel and this is not a one off . over the last few years the dog mess has been increased on the beach and people not picking up after their dogs.</p>		
<p>A person who is in control of a dog and if, between 1st May and 30th September, takes the dog onto the seashores within the administrative district of East Devon unless they have a reasonable excuse and if the owner, occupier or authority having control of the land has consented shall be guilty of an offence</p>	<p>69% of respondents agreed 31% of respondents disagreed</p>	<p>This regulation is far too strict. Cornwall have much more sensible times for dogs on beach. July and August dogs acceptable on beach after 6 or 7pm.</p> <p>Fully support these measures but they need an enforcement officer and large visible signage.</p>	<p>This is a continuation of the existing requirement of the Dog Control PSPO 2023.</p>	<p>It is recommended that the Cabinet agree this requirement in respect of all districts beaches other than Exmouth beach.</p>

A person who provides or deposits food for the consumption by seagulls onto the promenades, beaches and/or foreshore within the administrative area of East Devon District Council unless he has reasonable excuse shall be guilty of an offence	<p>92% of respondents agreed</p> <p>8% of respondents disagreed</p>	Seagulls are a know hazard and feeding them must be discouraged	This is a continuation of the existing requirement of the Dog Control PSPO 2023.	It is recommended that the Cabinet agree to keep the current control remains in place
--	---	---	--	---

Proposed change	Consultation Response	Public Comments	Officer Comment	Recommendation
Amendments to the groups of people exempt from being guilty of an offence including people who are registered blind, people with disability affecting mobility etc, people with a dog trained by prescribed charity, people in charge of a police or fire dog, person in charge of a working dog.	<p>83% of respondents agreed</p> <p>17% of respondents disagreed</p>	I can see no logical reason why the blind or otherwise physically disabled should be exempt from keeping dogs on leads in the relevant areas; whilst dogs for the blind and other assistance dogs are almost guaranteed to be on leads or harness anyway whilst accompanying their charge, ANY free-roaming unwatched dog still deposits dog mess which pedestrians then step in, regardless of it's working status. Having all dogs on	A separate Equality Impact Assessment has been completed and forms part of this Cabinet Report.	It is recommended that the Cabinet agree to keep the current control remains in place

		<p>leads offers some level of responsibility of their behaviour/mess by their owner, whether able-bodied or not.</p> <p>A disabled person should not be exempt in dog exclusion areas.</p> <p>A working dog could be misinterpreted as a livestock working dog i.e. collies retrievers springers etc.</p> <p>Generally agree but disagree with the exception for hunting dogs.</p> <p>Under term 2. many people may misuse the term "disability" then use discrimination against those whom are policing the areas</p>		
--	--	--	--	--

Exmouth	<p>1. Keep current seasonal dog exclusions as they are - <b>48% of respondents agreed</b> <b>52% of respondents disagreed</b></p> <p>2. Require dogs to be excluded from all areas of the beach between 1 May and 30 September <b>33% of respondents agreed</b> <b>67% of respondents disagreed</b></p>	<p>I totally oppose the idea of allowing dogs on the beach in the summer. If a dog relives itself at 9:30, the beach is still polluted at the 10 am. Dog owners will ignore the bylaw (as they do currently) and the council won't enforce them (as they don't currently).</p> <p><i>People who are scared of dogs should have the option of enjoying areas from which dogs are excluded for at least an equal amount of time as dog lovers have access. Eroding the exclusion first thing in the morning and at the end of the day is a slippery slope to allowing dogs on Exmouth beach for increasing amounts of time.</i></p> <p>There are plenty of places to walk dogs, the Maer, Estuary recreation ground and beach 365 days a year. Dog owners do not consider that not everyone wants a dog charging towards you and jumping up at you, this is especially frightening for</p>	<p>The introduction of a timed exclusion for Exmouth beach will limit the time that dogs are allowed on the beach as a whole and exclude them from the entire beach during the peak usage times and will enable more effective enforcement to be targeted during the exclusion times and will eliminate confusion as to where on the beach dogs are allowed. The timed exclusion are not considered to have a negative impact the Blue Flag status as the time dogs will be accessing the beach has been reduced, enforcement will be more targeted and effective and we are aware of Cornwall Councils beaches with timed dog control not being adversely affected in their Blue Flag applications</p> <p>The proposed restrictions on dog walking at Exmouth beach are intended to manage dogs more effectively during the tourist season and address anti-social behaviour. This could lead to displacement of dog walkers to the Pebblebed Heaths, potentially</p>	<p>It is recommended that the Cabinet agree the new controls</p>
---------	---	--	--	--

	<p>3.</p> <p>Allow dogs on all areas of Exmouth beach before 10.00 and after 18.00 between 1 May and 30 September</p> <p><b>60% of respondents agreed</b></p> <p><b>40% of respondents disagreed</b></p>	<p>young children who may not be any taller than the dog. There is a risk of toxocaritis to young children even if the dog owner clears up the mess.</p> <p>As the have the run of the beach in winter months, I would request no dogs on the beach in summer.</p> <p>My preference would be to allow dogs in all areas between 10 and 18:00 and in some areas all day.</p> <p>The Orcombe end can get very crowded at times of high tide and the proposal for before 10am and after 6pm would allow people to spread out walks and ease congestion for people with nervous dogs.</p>	<p>increasing pressure on protected habitats and species.</p> <p>Key factors that help mitigate this risk include:</p> <ul style="list-style-type: none"> <li>• <b>Timed beach access:</b> Dog walking will still be permitted before 10am and after 6pm. Monitoring by Environmental Health suggests these are the peak times for local dog walkers, with minimal use recorded between 10am–6pm (typically the hottest part of the day and when many people are at work).</li> <li>• <b>Devon Loves Dogs:</b> Our free responsible dog walking initiative has been running since 2017 and is very active on the heaths through guided walks, pop-ups, and outreach events.</li> <li>• <b>Wildlife Wardens:</b> Regular gazebo “pop-ups” and patrols, especially in summer, provide on-site engagement and education.</li> <li>• <b>Improved infrastructure on the Heaths:</b> Investment in signage, car</li> </ul>	
--	--	---	--	--



	<p>4.</p> <p>Remove all restrictions relating to seasonal dog exclusion areas</p> <p><b>28%of respondents agreed</b></p>	<p>The current dog exclusion areas allow dogs on some of the most popular and most pleasant areas of the beach. Many owners also ignore the restrictions or pretend not to be aware of them. A blanket ban would remove that excuse. The morning and evening permission has been suggested already but would simply lead to families finding dog mess on the beach in the mornings or cause harassment to those visiting the beach in the evenings.</p> <p>The current seasonal exclusions work well for the 75% of dog walkers who adhere to them. Every year, when I walk the beachfront at least twice daily, there are regular locals who disregard the notices, holiday makers/visitors who pay no attention. I saw nobody enforcing the exclusion areas at all last year.</p>	<p>parks, and waymarked routes helps guide visitors to less sensitive areas.</p> <ul style="list-style-type: none"> <li>• <b>Public awareness:</b> Promotion of the “Pebblebed Dog Code” and DLD’s “Four Paws Code” supports responsible behaviour.</li> <li>• <b>Ongoing outreach:</b> Social media and newsletters continue to raise awareness about wildlife and responsible dog ownership.</li> </ul> <p>In the longer term, we are working with partners to deliver Suitable Alternative Natural Greenspace (SANG) in and around Exmouth. These will be designed with dog walking in mind and should help reduce pressure on the heaths.</p> <p>The District Ecologist has confirmed that a Habitats Regulation Assessment is not required.</p> <p>No comment received from Exmouth Town Council. Minutes from Full Council meeting 7<sup>th</sup> April indicated that Councillors would</p>	
--	--	---	--	--

	<p><b>72% of respondents disagreed</b></p>	<p>The council should consider removing the seasonal ban for the area from the new lifeboat station to Orcombe Point. This is needed to provide space for the many residents and holiday makers who acquired dogs during Covid.</p> <p>I would like to see dogs allowed on all areas of Exmouth beach throughout the year. As a compromise a ban in the current area between 11am and 6pm would seem more practical. This would encourage tourists with dogs to areas with shops, cafes etc and potentially boost trade.</p> <p>All dogs should be banned all year</p> <p>Dogs should be banned from the main sections of the beach (&amp; it be enforced). Too many</p>	<p>comment individually through the consultation process.</p>	
--	--	--	---	--

		<p>people allow their dogs to roam free without supervision and do not pick up their mess. It is not acceptable for people to sit on the beach amongst the mess and have children playing in the sand.</p> <p>Restricting them to the Orcombe Point end is not a hardship as it is a large area. Not everyone likes dogs and they are a danger when allowed to run free.</p> <p>A friend of mine was knocked off her feet by a large boisterous dog and the owner could not have cared less.</p>		
Budleigh	<p>1.</p> <p>Keep the current seasonal dog exclusion areas as they are</p> <p><b>54% of respondents agreed</b></p> <p><b>46% of respondents disagreed</b></p> <p>2.</p> <p>Require dogs to be excluded from all areas of the beach</p>	<p>Dogs should be allowed on a lead under control but not off leads</p> <p>Just exclude dogs from the current excluded area between 10am and 6pm</p> <p>dogs should be banned all year</p>	The majority of respondents agreed that the current PSPO seasonal dog restrictions for Budleigh should remain in place.	It is recommended that the Cabinet agree to keep the current control remains in place

	<p>between 1 May and 30 September</p> <p><b>40% of respondents agreed</b></p> <p><b>60% of respondents disagreed</b></p> <p><b>3.</b></p> <p>Remove all restrictions relating to seasonal dog exclusion areas</p> <p><b>36%of respondents agreed</b></p> <p><b>64% of respondents disagreed</b></p>	<p>Allow dogs on all areas of the beach before 10:00 am and after 6:00 pm between May and September.</p> <p>Allow access between 10:00 and 6:00 pm May to September.</p> <p>Extend the exclusion to include April and October</p> <p>It works fine as it is.</p> <p>Allow dogs on beach all year round and in summer months until 10am</p>		
Sidmouth	<p><b>1.</b></p> <p>Keep current seasonal dog exclusions as they are</p> <p><b>53% of respondents agreed</b></p> <p><b>47% of respondents disagreed</b></p> <p><b>2.</b></p>	<p>Make any restriction between 10am and 6pm in the summer as they do in Cornwall. This is good for tourism too.</p> <p>dogs should be banned all year</p>	The majority of respondents agreed that the current PSPO seasonal dog restrictions for Sidmouth should remain in place	It is recommended that the Cabinet agree to keep the current control remains in place

	<p>Require dogs to be excluded from all areas of the beach between 1 May and 30 September</p> <p><b>38% of respondents agreed</b></p> <p><b>62% of respondents disagreed</b></p> <p>3.</p> <p>Remove all restrictions relating to seasonal dog exclusion areas</p> <p><b>32% of respondents agreed</b></p> <p><b>68% of respondents disagreed</b></p>	<p>It seems unfair to restrict dogs from all Sidmouth beaches and a restricted access beach such as the one near the lifeboat station or Jacobs Ladder might be suitable.</p> <p>I would much prefer Sidmouth to be dog friendly, the tide comes in and out often and therefore there isn't much room. The dogs need some sand, and aren't given much, whereas people can move to the pebbles. Dogs should be allowed on the sandy far right part of the beach.</p> <p>No dogs at all at any time</p>		
Beer	<p>1.</p> <p>Keep current seasonal dog exclusions as they are</p> <p><b>55% of respondents agreed</b></p> <p><b>45% of respondents disagreed</b></p>	<p><i>There is a real need for the proposed change to all dogs being on leads throughout the season and potentially the year on Beer beach.</i></p> <p><i>There are numerous people who believe that having their dog within their proximity is classed as having it under control however this is far from the case. Also since dogs were</i></p>	<p>A higher proportion of respondents agreed that the current PSPO seasonal dog restrictions for Beer should remain in place, compared to the proportion of respondents who agreed that dogs should be kept on a lead from a point</p>	<p>It is recommended that the Cabinet agree to keep the current control remains in place</p>

	<p><b>2.</b> Require dogs to be excluded from all areas of the beach between 1 May and 30 September</p> <p><b>44% of respondents agreed</b> <b>56% of respondents disagreed</b></p>	<p><i>allowed off the lead following recent changes, there has been a significant amount more of dog faeces present across the beach presenting a risk to public health.</i></p> <p>Make the restrictions between 10am and 6pm. Easy for everyone to understand.</p>	<p>immediately below the access path at Sea Hill on the beach to the edge of the cliffs in the east between 1 May and 30 September (in addition to the seasonal dog exclusion area).</p> <p>No comments received from Beer Parish Council.</p>	
	<p><b>3.</b> Require dogs to be kept on a lead from a point immediately below the access path at Sea Hill on the beach to the edge of the cliffs in the east between 1 May and 30 September (in addition to the seasonal dog exclusion area)</p> <p><b>51.5% of respondents agreed</b> <b>48.5% of respondents disagreed</b></p>	<p>Exclude dogs in current exclusion areas between 8am and 8pm</p> <p>Dogs should not have to be kept on a lead especially if they aren't allowed on the full beach. Having a designated area of the beach where dogs have to be kept on leads to limit dog interaction with the non-dog people is a more appropriate answer.</p>		
	<p><b>4.</b></p>	<p>Dogs should be kept on lead at all the time</p>		

	<p>Remove all restrictions relating to seasonal dog exclusion areas</p> <p><b>35% of respondents agreed</b></p> <p><b>65% of respondents disagreed</b></p>			
<p>Seaton</p> <p>page 55</p>	<p>1.</p> <p>Keep current seasonal dog exclusions as they are</p> <p><b>56% of respondents agreed</b></p> <p><b>44% of respondents disagreed</b></p> <p>2.</p> <p>Require dogs to be excluded from all areas of the beach between 1 May and 30 September</p> <p><b>42% of respondents agreed</b></p> <p><b>58% of respondents disagreed</b></p> <p>3.</p>	<p>Dogs should be prohibited from the east walk beach seasonally.</p> <p>Dogs should be on leads on all promenades at all times year round</p> <p>Restrict dogs between 10am and 6pm in the summer. Good for tourism too.</p> <p>Too many people have dogs, and too many of those dog owners don't appear to be responsible. As a non dog owner, I'm tired of walking along the beach and/or sea front promenade dodging the faeces not collecting, or stains and smears left after</p>	<p>The majority of respondents agreed that the current PSPO seasonal dog restrictions for Seaton should remain in place</p>	<p>It is recommended that the Cabinet agree to keep the current control remains in place</p>

	<p>Remove all restrictions relating to seasonal dog exclusion areas</p> <p><b>33% of respondents agreed</b></p> <p><b>67% of respondents disagreed</b></p>	<p>people have collected after their dogs. Dogs should be on leads as a minimum, or banned from the area entirely.</p> <p>Allow dogs before 8am and after 8pm</p> <p>Lots of visitors bring their dogs on holiday and they often cannot leave them in hotels/B&amp;Bs etc. They also cannot leave them in hot cars. Retaining the specific area of the beach where dogs can go means other people can use the other part of the beach. Hopefully that keeps everyone happy, especially our canine friends.</p>		
--	--	--	--	--



### Appendix 3. Table of Proposed Changes, Consultation Responses and Recommendations

#### Control of Anti-Social Behaviour and the Consumption of Intoxicating Substances (Exmouth) Order

Existing requirement	Consultation Response	Public Comments	Officer Comment	Recommendation
<p>If a person does not surrender any intoxicating substance including alcohol in their possession when requested by an authorised officer if:</p> <ul style="list-style-type: none"> <li>• They are found to be ingesting, inhaling, injecting, smoking or otherwise using intoxicating substances</li> <li>• They are in possession of such intoxicating substances with the intent of using such intoxicating</li> </ul>	<p>89% agreed</p> <p>11% disagreed</p>	<p><i>It should be possible to drink alcohol in moderation within the area.</i></p> <p>I do think that the responsible drinking say, beer or lager at an event such as a barbecue on the beach needs to be proportionately handled if there is no littering</p> <p>Alcohol should be allowed and only siezed if people are being irresponsible and abusive</p> <p>The suggestions are overly restrictive. People should be able to enjoy an alcoholic drink on the beach. Just because a minority cause a problem this should not be used as an excuse to penalise everyone. The solution is to deal</p>	<p>This is a continuation of the existing requirement of the Control of Anti-Social Behaviour and the Consumption of Intoxicating Substances (Exmouth) Order</p>	<p>It is recommended that the Cabinet agree to keep the current control remains in place</p>

<p>substances within this area, or</p> <ul style="list-style-type: none"> <li>The authorised person has reasonable grounds to believe that such person is using or intends to use the intoxicating substance within the said area.</li> </ul>		<p>with drunks and problem drinkers not to penalise people simply responsibly enjoying a trip to the beach.</p>		
<p>page 66 If a person at any times in a street or public space urinates or defecates they shall be guilty of an offence</p>	<p>94% agreed 6% disagreed</p>	<p>If a person found urinating discretely in a public space due to there being no toilets nearby then they should not be penalised. Many elderly folk have bladder problems and can be caught out unexpectedly.</p> <p>My concerns are closures of public toilets ??</p> <p>As you are in process of closing most of the public toilets, public urination is already a problem.</p>	<p>This is a continuation of the existing requirement of the Control of Anti-Social Behaviour and the Consumption of Intoxicating Substances (Exmouth) Order</p>	<p>It is recommended that the Cabinet agree to keep the current control remains in place</p>

<p>If a person at any times in a street or public open space makes unsolicited or unauthorised requests for money whether expressly requested or impliedly requested from persons not known to them they shall be guilty of an offence</p>	<p>91% agreed</p> <p>9% disagreed</p>	<p>homeless should still be able to beg, they have no other choice.</p> <p>Some of these things are already criminal offences so why are they not dealt with in this way?</p>		
<p>If a person at any time in a street or public open space behaves individually or in a group in a manner which has resulted or likely to result in a member of the public being intimidated, harassed, alarmed or distressed they shall be guilty of an offence</p>	<p>97% agreed</p> <p>3% disagreed</p>	<p>Who is going to police these? What about anti social behavior on the beach? As beach cleaner on a Sunday bags and bottles with urine and other waste are often found.</p> <p>You can't stop people drinking or having fun, this is not a theological or fascist country. Providing you aren't breaking any other law, there is no reason for to stop them. You want to stop littering and antisocial behaviour start by investing in youth activities and an active police presence.</p>	<p>This is a continuation of the existing requirement of the Control of Anti-Social Behaviour and the Consumption of Intoxicating Substances (Exmouth) Order</p>	<p>It is recommended that the Cabinet agree to keep the current control remains in place</p>

If when asked by an authorised officer, a person shall be guilty of an offence if they do not disperse away from that group of people.	94% agreed 6% disagreed	No public comments	This is a continuation of the existing requirement of the Control of Anti-Social Behaviour and the Consumption of Intoxicating Substances (Exmouth) Order	It is recommended that the Cabinet agree to keep the current control remains in place
--	----------------------------	--------------------	---	---

Proposed change	Justification	Consultation Response	Public Comments	Officer Comment	Recommendation
<p>The Order states that a person shall be guilty of an offence, if at any time in a street or public space, he does not surrender any intoxicating substance including alcohol in their possession when requested by an authorised officer.</p> <p>Exemptions apply in cases where the substances are used for a valid and demonstrable medicinal</p>	<b>To prevent discrimination against certain groups.</b>	<p><b>77% of respondents agreed</b></p> <p><b>23% of respondents disagreed</b></p>	<p><i>The law should be applied in the same way for anyone who offends regardless of reason.</i></p> <p>There should be no exemptions in public places</p> <p>I disagree with exemptions on cultural or religious grounds.</p>	The change to the exemptions will ensure that the Council fulfils its equality and diversity responsibilities.	It is recommended that the Cabinet agree to this amendment.

use, given to an animal as a medicinal remedy, are cigarettes or vaporisers (tobacco products), or are food stuffs regulated by food safety legislation, or where the use of the intoxicating substances falls within the curtilage of a premises licenced for the sale and consumption of alcohol, and within the operating hours of such.

We are proposing to make people who possess substances that are used for recognised cultural or religious practices exempt from offences under this Order.

Page 5

# Equality Impact Assessment

*Before completing this EIA please ensure you have read the EIA guidance notes and other resources, available on the [intranet](#)*



<b>Version</b>		<b>Date Completed</b>	<b>18.09.2024</b>
<b>Description of what is being impact assessed</b>			
<p>The Order has been proposed due to the volume of incidents that are occurring that are having a significant impact on people's quality of lives. Evidence has been collated of negative impacts on visitors, residents, businesses, and their employees; this Order will have a positive impact on residents, visitors and businesses.</p> <p>Surrendering of alcohol or psychoactive substances could positively benefit the taker from the self-harm that substance can cause to their health and the effect of that intoxicant in terms of leaving them in a vulnerable situation in a public place.</p> <p>A Public Space Protection Order (PSPO) allows a local authority to introduce a series of measures into a defined locality. The proposed PSPO will bring in measures to control and restrict certain activities, in particular the consumption of psychoactive substances, consumption of alcohol in public (other than in licensed premises), anti-social behaviour of groups or by an individual, aggressive begging, and urination (other than in public toilets).</p> <p>The purpose of completing this assessment is in relation to a review of the current PSPO.</p> <ol style="list-style-type: none"> <li>1. That the remaining prohibitions of the Public Spaces Protection Order and the existing boundaries remain unchanged.</li> <li>2. That the order is extended for a further period 3 years.</li> </ol>			
<b>Evidence</b>			
<b>What data/information have you used to assess how this policy/service might impact on protected groups?</b>			
<p><i>Further information is available at <a href="#">Equality data</a> and will be added to</i></p> <p>A 8 week consultation has taken place on the proposals and review. The results of the consultation will be presented to Council for a decision on whether the current PSPO will continue, and if so, what that Order would restrict.</p> <p>In relation to fixed penalty notices, officers will be recommending that these are not routinely served dynamically, but instead and in most instances, will be served retrospectively.</p> <p>There are a number of documents that will be made available. This includes information that details the proposed zone, a document that contains frequently asked questions, a copy of the proposed order prohibitions/restrictions.</p> <p>There has been a range of evidence that has been collated that captures the impact these activities contained within the proposed PSPO is having on visitors, residents, businesses and other stakeholders.</p>			

**Who have you consulted with to assess possible impact on protected groups and what have they told you?** If you have not consulted other people, please explain why?

Devon & Cornwall Constabulary, residents, visitors, elected members, regulatory services, Third Sector Providers,

*The public consultation took place over an eight-week period from 3 March to 28 April 2025. The consultation took place on the Councils online community engagement hub 'Commonplace' and paper copies were provided upon request.*

*Respondents could provide their views on the existing controls stated in the ASB Order, and on proposed changes to the Order.*

*The public consultation was advertised on the Council's social media forums and resident's newsletters, and there was also a press release. Statutory consultees were notified in writing to make them aware of the consultation. Statutory consultees included Town and Parish Councils, Devon County Council, Chief Officer of Police, Local Policing body, the Police and Crime Commissioner, and affected landowners and community representatives including Business Community, commissioned services, alcohol licensed trade, Taxi trade, health providers, users of intoxicating substances and individuals who are street attached.*

Analysis of impact on protected groups				
<p>The Public Sector Equality Duty requires us to eliminate discrimination, advance equality of opportunity and foster good relations with protected groups. The Council also has a legal duty to have due regard to armed forces personnel when carrying out healthcare, housing and education functions. Consider how this policy/service will achieve these aims. In the table below, using the evidence outlined above and your own understanding, detail what considerations and potential impacts against each of the three aims of the Public Sector Equality Duty. Based on this information, assess the likely outcome, before you have implemented any mitigation.</p>				
Protected group	Summary of impact	Negative outcome	Neutral outcome	Positive outcome
<b>Age</b>	<ul style="list-style-type: none"> <li>Reports have stated the life expectancy of someone 'sleeping rough' can be in their early 40's. Therefore, there is a clear benefit by encouraging and supporting people away from this lifestyle into sustainable accommodation with access to support services; where an intervention under the PSPO takes place in reaction to a breach of the PSPO, then that will be used to help link that person with support services both informally and through an ABC if part of a FPN.</li> <li>In Exmouth, there is growing evidence of more young people being drawn to the street attached lifestyle. Such young people are very vulnerable to exploitation in this situation, therefore using the PSPO tools to positively change behaviour will benefit this group. Street Marshalls are available to direct young people to alternative spaces that they can use, which are safe and won't put them at risk.</li> </ul>	□	□	☒
<b>Disability</b>	<ul style="list-style-type: none"> <li><b>Positive:</b> The Order may well have a positive effect and ensure that people who may be sleeping rough and have an addiction, engage with the support that is available and this in turn will deliver positive health benefits to them.</li> <li><b>Neutral:</b> A disproportionate number of street homeless (street attached) people suffer mental ill health and addiction and therefore present a higher risk of breaching the PSPO. To mitigate this, the Community Safety Partnership, have been developing a co-ordinated approach to weaken 'street attachments' and encourage the positive movement of an individual into sustainable accommodation with necessary support for</li> </ul>	□	☒	☒



	<p>issues of mental health, physical health and addiction.</p> <p>The measures that have been proposed will restrict the consumption of alcohol and NPS's on the street could also affect those that are alcohol dependent and/or drug dependent. The Order may well have a positive effect and ensure that people with a street attachment and have an addiction, engage with the support that is available and this in turn will deliver positive health benefits to them. The inclusion of a CPN/ABC option, will give a positive pathway to engagement with support services, and away from detrimental behaviour.</p>			
<b>Gender reassignment</b>	<ul style="list-style-type: none"> <li>There is no evidence that the order will impact on this group</li> </ul>	<input type="checkbox"/>	<input checked="" type="checkbox"/>	<input type="checkbox"/>
<b>Marriage and civil partnership</b>	<ul style="list-style-type: none"> <li>There is no evidence that the order will impact on this group</li> </ul>	<input type="checkbox"/>	<input checked="" type="checkbox"/>	<input type="checkbox"/>

Protected group	Summary of impact	Negative outcome	Neutral outcome	Positive outcome
<b>Pregnancy and maternity</b>	<ul style="list-style-type: none"> <li>There is no evidence that the order will impact on this group</li> </ul>	<input type="checkbox"/>	<input checked="" type="checkbox"/>	<input type="checkbox"/>
<b>Race and ethnicity</b>	<ul style="list-style-type: none"> <li>There is a risk that a number of people begging may be asylum seekers as they have not secured fixed accommodation at that time. Officers would initially be trying to sign-post individuals into the services available rather than using enforcement. This could have a positive effect in reaching out to individuals that may previously not have been aware how to approach those services.</li> </ul>	<input type="checkbox"/>	<input checked="" type="checkbox"/>	<input type="checkbox"/>
<b>Religion or belief</b>	<ul style="list-style-type: none"> <li>There is no evidence that the order will impact on this group however we will ensure there is no direct impact on religious gatherings for example and we may consult with faith-based groups to ensure no indirect impact when reviewing complaints.</li> </ul>	<input type="checkbox"/>	<input checked="" type="checkbox"/>	<input type="checkbox"/>
<b>Sex</b>	<ul style="list-style-type: none"> <li><b>Positive:</b> The Order may serve to help engage members of each gender that have alcohol and substances addictions with support services, thereby having a positive impact on their health.</li> <li><b>Neutral:</b> The majority of people sleeping rough, or street attached are male. Males, particularly with a street attachment, are more likely to have an alcohol or substance addiction. The alcohol/intoxicating substances, and anti-social behaviour elements could disproportionately affect men. However, the Order may serve to engage those affected with support services and have a positive impact on their health.</li> </ul>	<input type="checkbox"/>	<input checked="" type="checkbox"/>	<input checked="" type="checkbox"/>
<b>Sexual orientation</b>	<ul style="list-style-type: none"> <li>There is no evidence that the order will impact on this group</li> </ul>	<input type="checkbox"/>	<input checked="" type="checkbox"/>	<input type="checkbox"/>

Protected group	Summary of impact	Negative outcome	Neutral outcome	Positive outcome
<b>Armed Forces (including serving personnel, families and veterans)</b>	<ul style="list-style-type: none"> <li>There is no evidence that the order will impact on this group.</li> </ul>	<input type="checkbox"/>	<input checked="" type="checkbox"/>	<input type="checkbox"/>
<b>Other, e.g. carers, care leavers, low income, rurality/isolation, etc.</b>	<ul style="list-style-type: none"> <li>The intention is that this Order will sit alongside other interventions to encourage individuals to engage with the support services offered and this in turn will benefit the individuals involved. The use of a CPN/ ABC option will amplify this encouragement and this in turn will benefit the individuals involved.</li> <li>There is a potential impact on a number of groups that are likely to be affected. E.g. someone taking a NPS may feel their human rights have been impacted (enjoyment of property) if their supply of NPS is confiscated, or a loud, aggressive group asked to disperse (freedom of assembly and association). These human rights need to be balanced against the impact any ASB emanating from the subjects is having on other law-abiding users of a public space, and their human rights (e.g. the protection of property in relation to a retailer whose business is suffering from the ASB of groups regularly congregating outside his/her shop). The Community Safety Partnership will develop an Enforcement &amp; Positive/Restorative Pathway Protocol and training programme for officers, with safeguards to ensure this impact is mitigated, with appropriate, proportionate and compassionate application of any intervention.</li> </ul>	<input type="checkbox"/>	<input checked="" type="checkbox"/>	<input checked="" type="checkbox"/>
<b>Negative outcomes action plan</b> Where you have ascertained that there will potentially be negative outcomes, you are required to mitigate the impact of these. Please detail below the actions that you intend to take.				
<b>Action taken/to be taken</b>	<b>Date</b>	<b>Person responsible</b>	<b>How will it be monitored?</b>	<b>Action complete</b>
	Select date			<input type="checkbox"/>

Protected group	Summary of impact			Negative outcome	Neutral outcome	Positive outcome
	Select date				<input type="checkbox"/>	
	Select date				<input type="checkbox"/>	
	Select date				<input type="checkbox"/>	
	Select date				<input type="checkbox"/>	
	Select date				<input type="checkbox"/>	
	Select date				<input type="checkbox"/>	
	Select date				<input type="checkbox"/>	
If negative impacts remain, please provide an explanation below.						

<b>Completed by:</b>	<b>Alice Gill</b>
<b>Date:</b>	<b>16/4/25</b>
<b>Approved by:</b>	<i>Should be reviewed by the relevant Assistant Director/Director and signed off</i>
<b>Date:</b>	
<b>To be reviewed by:</b>	
<b>Review date:</b>	

***Ensure that a final copy of this impact assessment is sent to HR as per the equality impact assessment guidance.***

# Equality Impact Assessment – Dog Control Public Spaces Protection Order



<b>Version</b>	<b>1</b>	<b>Date Completed</b>	16/04/2025
<b>Description of what is being impact assessed</b>			
To finalise the varied Dog Control Public Spaces Protection Order.			
<b>Evidence</b>			
<b>What data/information have you used to assess how this policy/service might impact on protected groups?</b>			
<p><i>Further information is available at <a href="#">Equality data</a> and will be added to</i></p> <p>Local government association Public Spaces Protection Orders Guidance for Councils <a href="#">Public spaces protection orders: guidance for councils (local.gov.uk)</a></p> <p>General guidance relating to equality, diversity and inclusion: <a href="#">Diversity Guide (Introduction) - Equality, Diversity and Inclusion (devon.gov.uk)</a></p> <p>Equality and Human Rights Commission, Assistance Dogs: A Guide for all businesses: <a href="https://www.equalityhumanrights.com/guidance/assistance-dogs-guide-all-businesses">https://www.equalityhumanrights.com/guidance/assistance-dogs-guide-all-businesses</a></p>			
<b>Who have you consulted with to assess possible impact on protected groups and what have they told you? If you have not consulted other people, please explain why?</b>			
The public consultation took place over an eight-week period from 3 March to 28 April 2025. The consultation took place on the Councils online community engagement hub 'Commonplace' and paper copies were provided upon request.			

Respondents could provide their views on the existing controls stated in the Dog Control Orders, and on proposed changes to the Order.

The public consultation was advertised on the Council's social media forums and resident's newsletters, and there was also a press release. Statutory consultees were notified in writing to make them aware of the consultation. Statutory consultees included Town and Parish Councils, Devon County Council, Chief Officer of Police, Local Policing body, the Police and Crime Commissioner, and affected landowners and community representatives.

Community representatives included Assistance Dogs UK, Support Dogs, Canine Partners (registered charities) and The Kennel Club.

Other community representatives included Clinton Devon Estates and Devon Loves Dogs.

For proposed changes to dog controls in Kilminster, community representatives included: Arthur Hitchcock charity, Kilminster Dog Walkers Association, Kilminster Cricket Club, Kilminster Primary School.

For proposed changes to dog controls in Sidmouth, community representatives included: Friends of the Bays, Vision Group for Sidmouth (which includes Cherishing Sidmouth's Cemeteries group), and the Sid Vale Association.

Analysis of impact on protected groups				
<p>The Public Sector Equality Duty requires us to eliminate discrimination, advance equality of opportunity and foster good relations with protected groups. The Council also has a legal duty to have due regard to armed forces personnel when carrying out healthcare, housing and education functions. Consider how this policy/service will achieve these aims. In the table below, using the evidence outlined above and your own understanding, detail what considerations and potential impacts against each of the three aims of the Public Sector Equality Duty. Based on this information, assess the likely outcome, before you have implemented any mitigation.</p>				
Protected group	Summary of impact	Negative outcome	Neutral outcome	Positive outcome
<b>Age</b>	<ul style="list-style-type: none"> <li>The requirement for people in control of dog(s) to remove fouling will reduce potential incidents of children and young people coming into contact with dog faeces, for example, in recreational areas.</li> <li>The requirement for people in control of dog(s) to keep their dog on a lead on public roads or pavements adj. to roads, when asked by an authorised officer, and in specific areas used for recreation will prevent incidents of children and young people coming into contact with dogs who may be aggressive or out of control.</li> <li>Dog exclusion requirements in specific areas used for recreation e.g. play parks and BMX tracks will reduce incidents of dogs encountering children and young people and will reduce contact with fouling.</li> </ul>	□	□	☒
<b>Disability</b>	<ul style="list-style-type: none"> <li>Some areas with dog on lead and dog exclusion requirements will restrict off-lead exercise for dogs with owners who are disabled. This may mean that owners will have to travel further by foot or by vehicle, or will have to pay to use alternative exercise areas.</li> <li>Owners with disability may have reduced ability to know about the restrictions due to sensory and cognitive impairment</li> <li>Owners with disability may have reduced ability to communicate (i.e. hearing impairment, speech impairment)</li> </ul>	☒	□	☒



	<ul style="list-style-type: none"> <li>• Owners with disability may have reduced ability to understand the restrictions (mental impairment)</li> </ul> <p>Positive:</p> <ul style="list-style-type: none"> <li>• The requirement for people in control of dog(s) to keep their dog on a lead on public roads or pavements adj. to roads, when asked by an authorised officer, and in specific areas used for recreation will prevent incidents of disabled people coming into contact with dogs who may be aggressive or out of control.</li> </ul> <p>There are proposed exemptions within the Order:</p> <p><i>(i) A person who is registered as a blind person in a register compiled under section 29 of the National Assistance Act 1948 shall not be guilty of an offence if they are alone with the dog; or</i></p> <p><i>(ii) A person with a disability affecting their mobility, manual dexterity, physical coordination or ability to lift, carry or move everyday objects or who relies upon a dog trained by any prescribed charity (and is clearly identified) for assistance shall not be guilty of an offence if they are alone with the dog. A 'prescribed charity' including but not limited to:</i></p> <ul style="list-style-type: none"> <li>• <i>Dogs for the Disabled (Registered Charity no. 700454)</i></li> <li>• <i>Support Dogs (Registered Charity no. 1088281)</i></li> <li>• <i>Canine Partners for Independence (Registered Charity no. 803680)</i></li> </ul> <p><i>Any person in charge of a police dog or fire dog shall not be guilty of an offence. The term 'police dog' or 'fire dog' is deemed to be any dog, which is trained, or is undergoing structured training on behalf of the Chief Police Officer or Chief Fire Officer for the relevant service's dog unit.</i></p> <p><i>Working dogs: Any person in charge of working dog(s) shall not be guilty of an offence when they are working. Working dogs includes dogs that are being</i></p>			
--	---	--	--	--

	<i>used in connection with emergency Search &amp; Rescue, Law Enforcement, the work of HM Armed Forces and for agricultural activities (including activities regulated by the Hunting Act 2004).</i>			
<b>Gender reassignment</b>	<ul style="list-style-type: none"> <li>It is expected that there will be no impact.</li> </ul>	□	□	□
<b>Marriage and civil partnership</b>	<ul style="list-style-type: none"> <li>It is expected that there will be no impact.</li> </ul>	□	□	□

Protected group	Summary of impact	Negative outcome	Neutral outcome	Positive outcome
<b>Pregnancy and maternity</b>	<ul style="list-style-type: none"> <li>It is expected that there will be no impact.</li> </ul>	<input type="checkbox"/>	<input type="checkbox"/>	<input type="checkbox"/>
<b>Race and ethnicity</b>	<ul style="list-style-type: none"> <li>There may be difficulty understanding written English used on signage. However, each sign has an image to demonstrate the message of the sign and plain English is used. Signage is located on each access point to areas where dog controls are in place.</li> <li>There may be difficulty understanding authorised officers (Enforcement Officers) in conversation. However, plain English will be used by the officer and as necessary translations services may be offered</li> <li>Where a Fixed Penalty Notice (FPN) is served, there are concerns about understanding the content of such a penalty. However, plain English will be used and as necessary there will be the provision of translated documents</li> </ul>	<input type="checkbox"/>	<input checked="" type="checkbox"/>	<input type="checkbox"/>
<b>Religion or belief</b>	<ul style="list-style-type: none"> <li>It is expected that there will be no impact.</li> </ul>	<input type="checkbox"/>	<input type="checkbox"/>	<input type="checkbox"/>
<b>Sex</b>	<ul style="list-style-type: none"> <li>It is expected that there will be no impact.</li> </ul>	<input type="checkbox"/>	<input type="checkbox"/>	<input type="checkbox"/>
<b>Sexual orientation</b>	<ul style="list-style-type: none"> <li>It is expected that there will be no impact.</li> </ul>	<input type="checkbox"/>	<input type="checkbox"/>	<input type="checkbox"/>

Protected group	Summary of impact	Negative outcome	Neutral outcome	Positive outcome
<b>Armed Forces (including serving personnel, families and veterans)</b>	<ul style="list-style-type: none"> <li>It is expected that there will be no impact.</li> </ul>	<input type="checkbox"/>	<input type="checkbox"/>	<input type="checkbox"/>
<b>Other, e.g. carers, care leavers, low income, rurality/isolation, etc.</b>	<ul style="list-style-type: none"> <li>Dog on lead and dog exclusion requirements may mean that caring for protected groups will be easier due to incidents of people coming into contact with dogs who may be aggressive or out of control.</li> <li>There are concerns about accessibility of other areas where dogs can be exercised off lead by owners. No access to private transport may restrict ability to travel further to exercise a dog.</li> </ul>	<input checked="" type="checkbox"/>	<input type="checkbox"/>	<input checked="" type="checkbox"/>
<b>Negative outcomes action plan</b> Where you have ascertained that there will potentially be negative outcomes, you are required to mitigate the impact of these. Please detail below the actions that you intend to take.				
<b>Action taken/to be taken</b>	<b>Date</b>	<b>Person responsible</b>	<b>How will it be monitored?</b>	<b>Action complete</b>
Where there are concerns about accessibility of other areas where dogs can be exercised off lead by owners with disabilities or within rural areas, the Council will provide information about other dog walking spaces across the district.	01/04/2026	EP PEO	Web pages will be updated	<input type="checkbox"/>
Where owners with disability may have reduced ability to know about or understand the restrictions, the Council will ensure that signs are clear and maps are provided. Enforcement Officers will seek to provide written and verbal advice and education prior to fixed penalty notices being issued.	01/05/2026	DEO EP PEO	Signage will be updated as necessary	<input type="checkbox"/>
<b>If negative impacts remain, please provide an explanation below.</b>				

Protected group	Summary of impact	Negative outcome	Neutral outcome	Positive outcome

<b>Completed by:</b>	Alice Gill
<b>Date:</b>	16/04/2025
<b>Approved by:</b>	<i>Should be reviewed by the relevant Assistant Director/Director and signed off</i>
<b>Date:</b>	
<b>To be reviewed by:</b>	
<b>Review date:</b>	

***Ensure that a final copy of this impact assessment is sent to HR as per the equality impact assessment guidance.***

# Equality Impact Assessment – Seashores and Promenades Public Spaces Protection Order



<b>Version</b>	1	<b>Date Completed</b>	16/04/2025
<b>Description of what is being impact assessed</b>			
To finalise the varied Control on Seashores and Promenades Public Spaces Protection Order.			
<b>Evidence</b>			
<b>What data/information have you used to assess how this policy/service might impact on protected groups?</b>			
<p><i>Further information is available at <a href="#">Equality data</a> and will be added to</i></p> <p>Local government association Public Spaces Protection Orders Guidance for Councils <a href="#">Public spaces protection orders: guidance for councils (local.gov.uk)</a></p> <p>General guidance relating to equality, diversity and inclusion: <a href="#">Diversity Guide (Introduction) - Equality, Diversity and Inclusion (devon.gov.uk)</a></p> <p>Equality and Human Rights Commission, Assistance Dogs: A Guide for all businesses: <a href="https://www.equalityhumanrights.com/guidance/assistance-dogs-guide-all-businesses">https://www.equalityhumanrights.com/guidance/assistance-dogs-guide-all-businesses</a></p>			
<b>Who have you consulted with to assess possible impact on protected groups and what have they told you?</b> If you have not consulted other people, please explain why?			

The public consultation took place over an eight-week period from 3 March to 28 April 2025. The consultation took place on the Councils online community engagement hub 'Commonplace' and paper copies were provided upon request.

Respondents could provide their views on the existing controls stated in the Seashores and Promenades Order, and on proposed changes to the Order.

The public consultation was advertised on the Council's social media forums and resident's newsletters, and there was also a press release. Statutory consultees were notified in writing to make them aware of the consultation. Statutory consultees included Town and Parish Councils, Devon County Council, Chief Officer of Police, Local Policing body, the Police and Crime Commissioner, and affected landowners and community representatives.

Community representatives included Assistance Dogs UK, Support Dogs, Canine Partners (registered charities), The Kennel Club and Devon Loves Dogs.

Other community representatives included Clinton Devon Estates, Devon Cliffs Holiday Park (Bourne Leisure), businesses located close to Exmouth beach and Beer beach (where there are proposed changes).

Analysis of impact on protected groups				
<p>The Public Sector Equality Duty requires us to eliminate discrimination, advance equality of opportunity and foster good relations with protected groups. The Council also has a legal duty to have due regard to armed forces personnel when carrying out healthcare, housing and education functions. Consider how this policy/service will achieve these aims. In the table below, using the evidence outlined above and your own understanding, detail what considerations and potential impacts against each of the three aims of the Public Sector Equality Duty. Based on this information, assess the likely outcome, before you have implemented any mitigation.</p>				
Protected group	Summary of impact	Negative outcome	Neutral outcome	Positive outcome
<b>Age</b>	<ul style="list-style-type: none"> <li>The requirement for people in control of dog(s) to keep their dog on a lead along beach esplanades and in specific areas used for recreation will prevent incidents of children and young people coming into contact with dogs who may be aggressive or out of control.</li> <li>Seasonal dog exclusion requirements will reduce incidents of dogs encountering children and young people and will reduce contact with fouling.</li> </ul>	<input type="checkbox"/>	<input type="checkbox"/>	<input checked="" type="checkbox"/>
<b>Disability</b>	<ul style="list-style-type: none"> <li>Areas with dog on lead and seasonal dog exclusion requirements will restrict off-lead exercise for dogs with owners who are disabled. This may mean that owners will have to travel further by foot or by vehicle, or will have to pay to use alternative exercise areas.</li> <li>Owners with disability may have reduced ability to know about the restrictions due to sensory and cognitive impairment</li> <li>Owners with disability may have reduced ability to communicate (i.e. hearing impairment, speech impairment)</li> <li>Owners with disability may have reduced ability to understand the restrictions (mental impairment)</li> </ul>	<input checked="" type="checkbox"/>	<input type="checkbox"/>	<input checked="" type="checkbox"/>



	<p>Positive:</p> <ul style="list-style-type: none"> <li>The dog on lead requirements along the beach esplanades and seasonal dog exclusion requirements will prevent incidents of disabled people coming into contact with dogs who may be aggressive or out of control.</li> </ul> <p>There are proposed exemptions within the Order:</p> <p>(i) <i>A person who is registered as a blind person in a register compiled under section 29 of the National Assistance Act 1948 shall not be guilty of an offence under this Order if they are alone; or</i></p> <p>(ii) <i>A person with a disability affecting their mobility, manual dexterity, physical coordination or ability to lift, carry or move everyday objects or who relies upon a dog trained by any prescribed charity (and is clearly identified) for assistance shall not be guilty of an offence for failing to keep their dog on a lead or for entering onto land designated as a Dog Exclusion area between 1 May and 30 September each year if they are alone with the dog. A 'prescribed charity' including but not limited to:</i></p> <ul style="list-style-type: none"> <li><i>Dogs for the Disabled (Registered Charity no. 700454)</i></li> <li><i>Support Dogs (Registered Charity no. 1088281)</i></li> <li><i>Canine Partners for Independence (Registered Charity no. 803680)</i></li> </ul> <p>(iii) <i>Any person in charge of a police dog or fire dog shall not be guilty of an offence for entering onto land designated as a Dog Exclusion area between 1 May and 30 September each year or for failing to keep their dog on a lead. The term 'police dog' or 'fire dog' is deemed to be any dog, which is trained, or is undergoing structured</i></p>			
--	---	--	--	--

	<p><i>training on behalf of the Chief Police Officer or Chief Fire Officer for the relevant service's dog unit.</i></p> <p><i>(iv) Working dogs: Any person in charge of working dog(s) shall not be guilty of an offence for entering onto land designated as a Dog Exclusion area between 1 May and 30 September each year or for failing to keep their dog on a lead when they are working. Working dogs includes dogs that are being used in connection with emergency Search &amp; Rescue, Law Enforcement, the work of HM Armed Forces and for agricultural activities (including activities regulated by the Hunting Act 2004).</i></p>			
<b>Gender reassignment</b>	<ul style="list-style-type: none"> <li>It is expected that there will be no impact.</li> </ul>	<input type="checkbox"/>	<input type="checkbox"/>	<input type="checkbox"/>
<b>Marriage and civil partnership</b>	<ul style="list-style-type: none"> <li>It is expected that there will be no impact.</li> </ul>	<input type="checkbox"/>	<input type="checkbox"/>	<input type="checkbox"/>

Protected group	Summary of impact	Negative outcome	Neutral outcome	Positive outcome
<b>Pregnancy and maternity</b>	<ul style="list-style-type: none"> <li>It is expected that there will be no impact.</li> </ul>	<input type="checkbox"/>	<input type="checkbox"/>	<input type="checkbox"/>
<b>Race and ethnicity</b>	<ul style="list-style-type: none"> <li>There may be difficulty understanding written English used on signage. However, each sign has an image to demonstrate the message of the sign and plain English is used. Signage is located on each access point to areas where dog controls are in place.</li> <li>There may be difficulty understanding authorised officers (Enforcement Officers) in conversation. However, plain English will be used by the officer and as necessary translations services may be offered.</li> <li>Where a Fixed Penalty Notice (FPN) is served, there are concerns about understanding the content of such a penalty. However, plain English will be used and as necessary there will be the provision of translated documents.</li> </ul>	<input type="checkbox"/>	<input checked="" type="checkbox"/>	<input type="checkbox"/>
<b>Religion or belief</b>	<ul style="list-style-type: none"> <li>It is expected that there will be no impact.</li> </ul>	<input type="checkbox"/>	<input type="checkbox"/>	<input type="checkbox"/>
<b>Sex</b>	<ul style="list-style-type: none"> <li>It is expected that there will be no impact.</li> </ul>	<input type="checkbox"/>	<input type="checkbox"/>	<input type="checkbox"/>
<b>Sexual orientation</b>	<ul style="list-style-type: none"> <li>It is expected that there will be no impact.</li> </ul>	<input type="checkbox"/>	<input type="checkbox"/>	<input type="checkbox"/>

Protected group	Summary of impact	Negative outcome	Neutral outcome	Positive outcome
<b>Armed Forces (including serving personnel, families and veterans)</b>	<ul style="list-style-type: none"> <li>It is expected that there will be no impact.</li> </ul>	<input type="checkbox"/>	<input type="checkbox"/>	<input type="checkbox"/>
<b>Other, e.g. carers, care leavers, low income, rurality/isolation, etc.</b>	<ul style="list-style-type: none"> <li>Caring for protected groups may be easier due to controls in place.</li> <li>There are concerns about accessibility of other areas where dogs can be exercised off lead by owners. No access to private transport may restrict ability to travel further to exercise a dog. However, there are other areas within the locality of Kilmington and Honiton where dogs can be exercised off the lead.</li> </ul>	<input checked="" type="checkbox"/>	<input type="checkbox"/>	<input checked="" type="checkbox"/>
<b>Negative outcomes action plan</b>  Where you have ascertained that there will potentially be negative outcomes, you are required to mitigate the impact of these. Please detail below the actions that you intend to take.				
<b>Action taken/to be taken</b>	<b>Date</b>	<b>Person responsible</b>	<b>How will it be monitored?</b>	<b>Action complete</b>
Where there are concerns about accessibility of other areas where dogs can be exercised off lead by owners with disabilities or within	01/04/2026	EP PEO	Web pages will be updated	<input type="checkbox"/>

Protected group	Summary of impact		Negative outcome	Neutral outcome	Positive outcome
rural areas, the Council will provide information about other dog walking spaces across the district.					
Where owners with disability may have reduced ability to know about or understand the restrictions, the Council will ensure that signs are clear and maps are provided. Enforcement Officers will seek to provide written and verbal advice and education prior to fixed penalty notices being issued.	01/05/2026	DEO EP PEH	Signage will be updated as necessary	<input type="checkbox"/>	
<b>If negative impacts remain, please provide an explanation below.</b>					

<b>Completed by:</b>	<b>Alice Gill</b>
<b>Date:</b>	<b>16/04/2025</b>
<b>Approved by:</b>	<i>Should be reviewed by the relevant Assistant Director/Director and signed off</i>
<b>Date:</b>	
<b>To be reviewed by:</b>	
<b>Review date:</b>	

***Ensure that a final copy of this impact assessment is sent to HR as per the equality impact assessment guidance.***

Report to: **Overview Committee**

Date of Meeting 30<sup>th</sup> September 2025

Document classification: Part A Public Document

Exemption applied: None

Review date for release N/A



## **Public Toilets Programme Review**

### **Report summary:**

This report follows a Spotlight Briefing to Overview and Scrutiny Committees on 15<sup>th</sup> July. We have reached a key milestone in the programme for delivering against the outcomes of the 2021 Public Toilets Review. Phase 1 of the planned investment programme has now been completed alongside the transfer of some facilities to Town and Parish Councils and the sale/lease or closure of others.

The report also considers the current context for the delivery of the Public Toilets programme, including the challenges associated with the Mid Term Financial Plan and the backdrop of forthcoming local government reorganisation, and considers the options for how to move forward whilst also reflecting on learnings from this first phase.

The outcomes of that Spotlight session were as follows:

1. Overview Committee to receive a report and make recommendations on way forward.
2. The Scrutiny function to be satisfied by a cross-party Members group with oversight of project as it moves forward.

This report addresses that first outcome and provides Overview Committee with the opportunity to influence direction of travel and a more detailed options appraisal to inform Cabinet decision making.

### **Is the proposed decision in accordance with:**

Budget Yes ☒ No ☐

Policy Framework Yes ☒ No ☐

### **Recommendation:**

That Overview Committee

Recommend to Cabinet that an options appraisal is undertaken to influence direction of travel informed through the debate and any additional recommendations that flow from Overview Committee.

### **Reason for recommendation:**

To inform Officers as to next steps.

Portfolio(s) (check which apply):

- ☒ Assets and Economy
- ☐ Communications and Democracy
- ☐ Council, Corporate and External Engagement
- ☐ Culture, Leisure, Sport and Tourism
- ☐ Environment - Nature and Climate
- ☐ Environment - Operational
- ☒ Finance
- ☐ Place, Infrastructure and Strategic Planning
- ☐ Sustainable Homes and Communities

### **Equalities impact** Low Impact

Any new decisions made will be subject to a new Equalities Impact Assessment if deemed necessary

### **Climate change** Medium Impact

**Risk:** Medium Risk; Any recommendation not to proceed as per the programme will have implications on future revenue projections but also on quality of public toilet provision and potentially creating a two-tier offering though there would be a capital budget saving.

**Links to background information** Click here to enter links to background information; appendices online; and previous reports. These must link to an electronic document. Do not include any confidential or exempt information.

### **Link to [Council Plan](#)**

Priorities (check which apply)

- ☒ A supported and engaged community
- ☒ Carbon neutrality and ecological recovery
- ☒ Resilient economy that supports local business
- ☒ Financially secure and improving quality of services

---

## **Report in full**

### **Background and Context**

- 1.1 The activities of recent years in connection with public toilets arose through the outcomes of the 2021 Public Toilets Review. Of all Council assets, public toilets are some of the most visible and public facing.
- 1.2 The Council needed to act to respond to medium term financial challenges, an under-investment in public toilets for many years, and to provide a more sustainable future for those retained sites which after all are a discretionary service. It wasn't just the condition that was a concern, the design with communal wash areas were no longer considered best practice, hence new facilities across the country being designed similar to our new facilities.
- 1.3 Decisions were based on guiding principles to try to ensure we get the right toilet in the right place, whilst also respecting that EDDC could no longer afford to provide all the sites it had previously. The factors included:



- a) How much the public toilets were used.
- b) The proximity to other sites and walking distances for people to find a toilet.
- c) Possible alternative uses, some of which could include public toilets provided by other businesses or organisations or additional amenity uses such as cafes and community facilities.
- d) Opportunities for innovation, such as asking people to pay to use the toilets so we can continue to provide and invest in them.

- 1.4 Decisions in 2021 were not easy but unsustainability of the status-quo necessitated a new approach. Principles were used in an open manner with Members to make some really difficult decisions, to close some sites, whilst trying to protect a level of provision, and looking to others to fund or pick up those sites we could no longer afford to operate.
- 1.5 After consultation, the decisions resulted in 15 sites of 27 originally operated, being retained and a capital budget of £3.4m being secured along with a decision to charge users. In addition, we secured £242K from then Department for Levelling Up, Housing and Communities (DLUHC) towards Adult Changing Places facilities at 3 sites (was to be 4 had we secured planning consent at Sidmouth Ham Car Park) that needed to commence by 31st March 2025. Details relating to all sites can be found here on the Council's website [New Public Toilets - East Devon](#) and this also includes a link to the Frequently Asked Questions page.
- 1.6 The 15 sites remaining open as an outcome of the 2021 Public Toilets Review are as follows:

Exmouth Foxholes
Budleigh Salterton Lime Kiln
Honiton Lace Walk
Seaton West Walk
Sidmouth Ham Car Park
Exmouth Magnolia Centre
Exmouth Queens Drive
Exmouth Manor Gardens
Axminster West Street Car Park
Budleigh Salterton Cliff Path
Sidmouth Connaught Gardens
Exmouth Phear Park
Sidmouth Market Place
Beer Jubilee Gardens
Sidmouth Triangle

- 1.7 Subsequently decisions have been made to keep both Station Toilets in Exmouth and Thury Harcourt Toilets in Seaton open, though neither have any capital budget secured through the Public Toilets Review.

## Spotlight session

- 1.8 A Spotlight Briefing to Overview and Scrutiny Committees on 15<sup>th</sup> July discussed the following issues arising from delivery of the first phase;
- Over-run of the four sites this summer and reasoning.

- The financial business case for the new builds instead of a more modest refurbishment.
- Access arrangements, particularly for disabled users.
- Addressing the vandalism issues.
- A tiered pricing structure.
- Decision making in 2021, the data used to justify closures and the consultation process.
- Signage explaining to users the costs of operating a public toilet – noting the importance of the public understanding the cost implications of operating a public toilet facility.
- Engagement – importance of ensuring Members and the public are informed and how existing arrangements can be developed further for subsequent investment phases.

The specific outcomes of the Spotlight session were that;

- Overview Committee to receive a report and make recommendations on way forward.
- The Scrutiny function to be satisfied by a cross-party Members group with oversight of project as it moves forward.

This report addresses that first outcome and provides Overview Committee with the opportunity to influence direction of travel.

## Current Position

1.9 The following sites (phase 1) opened this Summer:

- Budleigh Salterton Lime Kiln – mid June
- Honiton Lace Walk – mid June
- Exmouth Foxholes – early July
- Seaton West Walk – mid August



Budleigh Salterton



Honiton



Standard cubicle

- 1.10 The three sea front locations included adult changing places facilities using £242K secured from the then Department for Levelling Up, Housing and Communities (DLUHC). This was the highest allocation of any south-west authority and one of highest in the country. Our bid was strong due to the interrelationship with the wider public toilet investment programme ensuring a truly integrated delivery.



- 1.11 The investment programme is being supported by Kendall Kingscott Ltd who have worked both on Phase 1 but also already up to RIBA stage 3 i.e. ready for planning on ten of the remaining eleven sites, all but Sidmouth Ham Car Park due to that scheme having previously been refused. Structure 100 Ltd have delivered the modular build and Fifields the enabling works and groundworks. The support of these companies was procured as followed;

- The Consultants Contract. Kendall Kingscott Ltd was procured via a framework. The framework used was the NHS SBS Construction Consultancy Services 2. We negotiated their fees based on an average of the framework fees.
- The Modular Building Contract. Structure 100 Ltd (Healthmatic Ltd's sister company) was appointed via competitive tender. Kendall Kingscott undertook the tender exercise. Three suitable contractors were invited to tender.: The lowest tender offer was accepted. There was a tender report prepared by Kendall Kingscott to evidence the process. Danfo and Healthmatic are the 2 leading industry suppliers. There are few other competitors in this market.
- The Groundworks Contract. Fifields Ltd was appointed via competitive tender. Kendall Kingscott undertook the tender exercise. Five suitable contractors were invited to tender. The lowest tender offer was accepted. There was a tender report prepared by Kendall Kingscott to evidence this process.

- 1.12 The costs, excluding EDDC officer time, incurred to date are as follows. Whilst these costs might seem high, the costs are reflective of the specialist nature of the buildings and the high level of use they must withstand. Costs are market tested through procurement routes taken.

Exmouth Foxholes	£508,079.34 (incl Changing Places)
Budleigh Salterton Lime Kiln	£338,791.60 (incl Changing Places)
Honiton Lace Walk	£367,013.71
Seaton West Walk	£478,795.57 (incl Changing Places)
TOTAL (having deducted the £242K for adult changing places)	£1,450,680.22

1.13 This therefore leaves an approved capital budget of circa £1,950,000 remaining. For the remaining 11 sites in programme, as follows, we are advised of £3,035m estimated costs (construction and fees), meaning that we have an estimated budget shortfall of circa £1,085m. Costs are slightly lower than 2021 projections, though then inflated to reflect general build cost inflation. In addition, we would then need further budget to add Exmouth Station and Seaton Thury Harcourt into programme should we wish to develop to similar standard – both these sites are included within possible place making projects, otherwise there is no capital budget as these were classified as category B sites (to be disposed / transferred).

1.14 Remaining sites in approved programme are as follows:

Sidmouth Ham Car Park
Exmouth Magnolia Centre PCs
Exmouth Queens Drive Public Toilets
Exmouth Manor Gardens Public Toilets
Axminster West Street Car Park Public Toilets
Budleigh Salterton Cliff Path
Sidmouth Connaught Gardens Public Toilet
Exmouth Phear Park
Sidmouth Market Place Public Toilets
Beer Jubilee Gardens Public Toilets
Sidmouth Triangle Public Toilets

## Assessment

1.15 Delivery of the overall programme was never going to be straightforward as we were transferring some sites to Parish and Town Councils alongside leasing or selling others and closing those that had no viable future. This was alongside the major investment programme in our most popular Category A facilities that would involve taking them out of action for six months, redesigning and reprovisioning them and then reopening with associated charging.

1.16 The overall benefits and successes arising from the programme to date are the following;

- Modern and clean facilities – positive feedback from overwhelming majority of users. We have received 125 complaints (to early September) out of circa 40,000 uses of our new public toilets, representing circa 0.3% of the total.
- Much improved operational design.
- Income generating – circa £16,000 generated prior to 1<sup>st</sup> September, helping to ensure the long-term financial sustainability of these facilities.
- Adult Changing Places – only by linking to Public Toilets Review.
- £123,000 capital receipts from disposals to date.
- Placemaking – aesthetics, paving, showers, planters etc.
- At Orcombe Point former public toilets, we've granted a 25-year lease, generated a commercial rent, significant private sector investment in repurposing building, placemaking, jobs and an accessible toilet provision moving forward funded by the tenant.
- Transfers completed to two Towns and one Parish Council - £1 freehold, retaining an accessible toilet provision.
- Delivered ongoing revenue saving, which was necessary to provide a balanced budget. We did this whilst retaining a level of provision for this important but discretionary service area.

1.17 Alongside these benefits we have also identified a number of challenges and learning points;

- To build on the improved effective and recorded communication to Town and District Councillors moving forward.
- Whilst we have good web pages and FAQ's which address almost all of the questions and concerns, there is a lack of knowledge by the public that this exists, so further work required to promote and update the approach and information.
- Portaloo's – Best solution during winter due to availability and not needing to connect to mains drainage (over land) or electric, though perhaps not during summer in high footfall areas. The need to develop agility to increase provision in advance of times of increased footfall
- Overrun – where build out was as per the original design, there was a seven-week delay on a two-year programme, however it had always been known that summer months are critical for seafront locations. Overrun not a result of any specific one-off failing and seven weeks was not a significant timeline in two years, however recognise the impact this had over the summer.
- An increase in the internal project / programme management is proposed to ensure the project is fully supported and any delays/challenges can be acted upon immediately. .
- Teething issues (not unexpected), vandalism at recently opened sites and inappropriate use of doors have resulted in a regular stream of cubicles being out of use and requiring repairs. The incident at Foxholes with a member of public being locked in cubicle was a result of a faulty lock part and subsequently been remedied by supplier.
- A higher than anticipated number of users struggling with the payment mechanism. In general, though with some limited exceptions, when investigated no faults have been identified. Clear and prominent signage will be in place for all future openings to mitigate against this, but we must be mindful that this model is tried and tested nationally and with a number of other facilities recently installed across South West.

1.18 We continue to review operational performance carefully and ensure that any further service improvements that are identified are implemented.

## 1.19 Next phases

- Disposal of some closed sites having explored opportunities with Towns and Parishes.
- Of the programme of 15 investment sites, 11 sites remain. Those 11 sites are generally smaller, more straightforward and less seasonal dependant. There has since been two additional sites retained and therefore also need including, these being Exmouth Station and Seaton Thury Harcourt sites.
- All remaining 11 sites are at RIBA stage 3 and ready to commence consultation with Ward Members and then submission of planning applications. Intention is to submit applications for all remaining sites.
- Currently the immediate next phase (winter 2025/26) is:
  - Magnolia Centre, Exmouth
  - Manor Gardens, Exmouth
  - Queen's Drive, Exmouth – refurbishment only
  - West Street, Axminster

1.20 With the first phase of the investment programme now complete and operational, there is the opportunity to consider how to proceed with the next phases. Alongside the learnings from the first phase, this needs to consider the Council's budgetary position as well as the backdrop of local government reorganisation.

## Options

1.21 There are essentially three options as to how to proceed. These are as follows;

- 1) Complete the investment programme as planned, recognising that additional budget will be required.
- 2) Complete an investment programme but within budget – this could include closing some toilets and / or revising the specification.
- 3) Do not proceed with the investment programme prior to local government reorganisation

1.22 The relative costs and benefits of each of these will need to be carefully considered as part of a comprehensive options appraisal.

1.23 This Committee can make recommendations to Cabinet to inform next steps, specifically the options appraisal, in regard to the investment programme. In doing so, the following should be understood:

- Our public toilets require significant investment. To halt the programme at this stage would lead to ongoing StreetScene operational and Buildings & Facilities maintenance challenges and require more reactive spend. We would also create a two-tier offering across the District.
- The challenges with the Phase 1 investment should not be underestimated, but this was a first phase. It was the adult changing places requirement that meant we started with our most challenging sites and arguably those attracting greatest risk.
- We will need to bolster our internal project management arrangements to ensure smoother delivery of subsequent sites and to ensure all risks are monitored and mitigated.
- Additional budget is needed of £1,085m (current estimate) to complete programme. In addition, a further budget for Seaton Thury Harcourt and Exmouth Station sites, if the option to continue with investing in all sites is agreed. Delivery of subsequent phases will unlikely be completed until

Summer 2027, so a new timeline will need to be considered alongside the new options.

- Should the investment plan be completed we have forecasted £200,000 annual income from charging, noting though that we will not be at this level until 2028/29.
- A two tier system will drive use of non-charging sites and with higher footfall may increase dissatisfaction with old and tired sites.
- Reviewing unitary experiences elsewhere, place budgets are often under pressure. If we engage with Town and Parish councils with regard to asset devolution, the prospect of a refurbished toilet block with a balancing income stream is more appealing than a costly asset which requires investment. Even if we retain toilets, we still have MTFP budget challenges and savings targets, so toilet sites which can cover their operating costs through charging are preferable to enable service protection moving forwards.
- Should the Council not proceed further with these 11 sites, then abortive costs for work already completed by consultants is circa £135,000.

## Conclusion

- 1.24 In terms of the bigger questions around the Medium-Term Financial Plan and Local Government Reorganisation interplay with this investment programme we need to be mindful that public toilets may well be one category of asset that best sits with Town Councils. If this is so, there is then a question as to whether investment works should be undertaken prior to, or after any community asset transfer, having identified these remaining 11 sites as needed. It is important therefore to ensure legacy moving forward. This then needs to be balanced against our competing budget requirements. What is clear is that with MTFP budget savings requirements over the next two years, we can't afford to roll back decision making and operate all sites as we did in 2021, without significant savings or cuts elsewhere.
- 1.25 Overview Committee has the opportunity to reflect on the project to-date, to consider the Medium-Term Financial Plan and Local Government Reorganisation interplay and contribute to the options appraisal to influence direction of travel. The three options being proposed are as set out in 1.21.

## Financial implications:

---

Members will need to balance several factors in considering the implications involved in this report, this will include the financial position of the deficit in the medium term financial plan. As recommended in the report, Members will need further details and analysis to help make an informed decision.

## Legal implications:

There are no substantive legal issues to be added to this report. The legal issues will depend upon the outcome of the options appraisal and next steps.

<b>Overview Committee Work Programme 2025 – 2026</b>
--

Proposed date	Topic
15 July 2025	Joint Overview and Scrutiny Spotlight Session: update on public conveniences provision (Officer: AD Place, Assets & Commercialisation)
30 September 2025	<ol style="list-style-type: none"> <li>1. Public Toilets review (Officer: AD Place, Assets &amp; Commercialisation)</li> <li>2. Blackdown Hills National Landscape Annual Review and Management Plan (Officer: AD Countryside and Leisure)</li> <li>3. Public Space Protection Orders consultation (Officer: AD Environmental Health)</li> </ol>
27 November 2025	Housing Strategy (Officer: Housing Projects Officer)
3 December 2025	Joint meeting with Scrutiny Committee to consider Directorate Plans for 2026-27
14 January 2026	Joint budget meeting with Scrutiny Committee
22 January 2026	
26 March 2026	
Dates TBC	Topic – dates to be confirmed with lead officers
TBC	Beach Hut arrangements and charging review of current agreed policy
TBC	Anti-Poverty Strategy
TBC	Outcome of government consultation on hybrid meetings and proxy voting – development of formative policy proposals



## EAST DEVON DISTRICT COUNCIL

### Forward Plan of Key Decisions - For the 4-month period: 1 October 2025 to 31 January 2026

This plan contains all the Key Decisions that the Council's Cabinet expects to make during the 4-month period referred to above. The plan is rolled forward every month.

12.1.1 Key decisions: A "key decision" means an executive decision which is likely:

- (a) to result in the Council incurring expenditure or the making of savings of £100,000 or more; or
- (b) to be significant in terms of its effects on communities living or working in an area comprising two or more wards in the Council's area:
  - (i) In accordance with section 38 of the Local Government Act 2000, in determining the meaning of "significant" regard shall be had to any guidance for the time being issued by the Secretary of State
  - (ii) A decision taker may only make a key decision in accordance with the requirements of the Executive Procedure Rules set out in Part 4 of this Constitution.

**A public notice period of 28 clear working days is required when a Key Decision is to be taken by the Council's Cabinet even if the meeting is wholly or partly to be in private.**

The Cabinet may only take Key Decisions in accordance with the requirements of the Executive Procedure Rules set out in Part 4 of the Constitution and the Local Authorities (Executive Arrangements) (Meetings and Access to information) (England) Regulations 2012. A minute of each Key Decision is published within 2 days of it having been made. This is available for public inspection on the Council's website <http://www.eastdevon.gov.uk>, and at the Council Offices, Blackdown House, Border Road, Heathpark Industrial Estate, Honiton. The law and the Council's constitution permit urgent Key Decisions to be made without 28 clear days' notice of the proposed decisions having been published provided certain procedures are followed. A decision notice will be published for these in exactly the same way.

This plan also identifies Key Decisions which are to be considered in the private part of the meeting (Part B) and the reason why. Any written representations that a particular decision should be moved to the public part of the meeting (Part A) should be sent to the Democratic Services Team (address as above) as soon as possible. **Members of the public have the opportunity to speak on the relevant decision at the meeting in accordance with the Council's public speaking rules.**

#### Obtaining documents

Committee reports in respect of Key Decisions include links to the relevant background documents. If a printed copy of all or part of any report or background document is required, please contact Democratic Services (address as above) or by calling 01395 517546.

Members of the public who wish to make any representations or comments concerning any of the Key Decisions referred to in this Forward Plan may do so by writing to the Leader of the Council c/o Democratic Services (as above).

<b>Key Decision</b>	<b>Portfolio (Lead Officer)</b>	<b>Documents to be considered before Cabinet take decision</b>	<b>Whether other documents will be considered before decision taken [Y/N]</b>	<b>Other meetings where matter is to be debated / considered</b>	<b>Date of Cabinet meeting</b>	<b>Part A = Public meeting  Part B = private meeting [with reasons]</b>
---------------------	-------------------------------------	--	---	--	------------------------------------	---

Towards Zero Carbon Development in the West End: Interconnector Project Final Investment Decision (Parts 2)	Director of Place	Full Business Case			26 November 2025 Part 2	Part B
Use of Climate Change Budget to support Green Loans to Householders	Assistant Director Environmental Health					Part A
Air Quality/Contaminated Land Strategies	Assistant Director Environmental Health					Part A
Anti-Poverty Strategy	Asst Director Revenues, Benefits, CSC, Fraud & Compliance	Outcomes from consultation		Poverty Working Panel	29 October 2025	Part A
Place and Prosperity Fund acquisition	Assistant Director Place Assets & Commercialisation	None	Business case/Appraisal of proposal	Place and Prosperity Investment Board		Part B
Formation of an Exmouth Town and Seafront Subgroup	Assistant Director Place Assets & Commercialisation	Steering Group ToR		Placemaking in Exmouth Town and Seafront Group		Part A

<b>Key Decision</b>	<b>Portfolio (Lead Officer)</b>	<b>Documents to be considered before Cabinet take decision</b>	<b>Whether other documents will be considered before decision taken [Y/N]</b>	<b>Other meetings where matter is to be debated / considered</b>	<b>Date of Cabinet meeting</b>	<b>Part A = Public meeting  Part B = private meeting [with reasons]</b>
---------------------	-------------------------------------	--	---	--	------------------------------------	---

Council Depots Review	Project Manager Place, Assets & Commercialisation					Part B (commercially sensitive)
Exmouth Town Hall	Assistant Director Place Assets & Leisure				1 October 2025	Part B (commercially sensitive)
Site Acquisition opportunity	Assistant Director Place Assets & Leisure				1 October 2025	Part B (commercially sensitive)
Hayne Lane Masterplan	Assistant Director Place Assets & Commercialisation	Hayne Lane Masterplan	No	Asset Management Forum		Part A
Strategic Development Review – Exeter Science Park Limited	Director of Place		No			Part B
Public Toilets Review	Assistant Director Place Assets & Commercialisation					Part A
Housing Strategy	Director Housing and Health			Overview Committee	1 October 2025	Part A
Harepath Road, Seaton	Assistant Director Place Assets &	None	N	AMF (Part B)	1 October 2025	Part B

<b>Key Decision</b>	<b>Portfolio (Lead Officer)</b>	<b>Documents to be considered before Cabinet take decision</b>	<b>Whether other documents will be considered before decision taken [Y/N]</b>	<b>Other meetings where matter is to be debated / considered</b>	<b>Date of Cabinet meeting</b>	<b>Part A = Public meeting  Part B = private meeting [with reasons]</b>
---------------------	-------------------------------------	--	---	--	------------------------------------	---

Dog Control Enforcement Policy	Assistant Director Environmental Health			Overview Committee		Part A
Private Sector Housing Enforcement Policy	Assistant Director Environmental Health					Part A
Community Grant funding	Asst Director Revenues, Benefits, CSC, Fraud & Compliance				29 October 2025	Part A
Cranbrook Leisure - Review and approval of the project scope for Cranbrook Leisure together with approval of a budgetary envelope for delivery of the capital works.	Assistant Director Place Assets & Commercialisation			AMF (Part B)	29 October 2025	Part B
Climate Change Strategy	Assistant Director Environmental Health				Winter 2025/26	Part A
Public Space Protection Orders	Assistant Director Environmental Health				Winter 2025	Part A

<b>Key Decision</b>	<b>Portfolio (Lead Officer)</b>	<b>Documents to be considered before Cabinet take decision</b>	<b>Whether other documents will be considered before decision taken [Y/N]</b>	<b>Other meetings where matter is to be debated / considered</b>	<b>Date of Cabinet meeting</b>	<b>Part A = Public meeting  Part B = private meeting [with reasons]</b>
---------------------	-------------------------------------	--	---	--	------------------------------------	---

Asset acquisition in Exmouth	Project Manager Estates					Part B
Recycling & Waste LATCo governance and financial proposal – further detail	Assistant Director StreetScene				1 October 2025	Part B
Update re Management of Funding for Clyst Meadows Country Park	Assistant Director Countryside and Leisure			Strategic Planning Committee	26 November 2025	Part A possibly Part B some
EDDC Local Nature Recovery Plan	Assistant Director Countryside and Leisure				26 November 2025	Part A
Exmouth BMP Update	Assistant Director Countryside and Leisure				26 November 2025	Part A
Supported Housing Services	Assistant Director Statutory Housing Services				26 November 2025	Part A
Procurement of CBRE through the Crown Commercial Services Framework to undertake work in relation to the second new community	Delivery Manager					Part A

<b>Key Decision</b>	<b>Portfolio (Lead Officer)</b>	<b>Documents to be considered before Cabinet take decision</b>	<b>Whether other documents will be considered before decision taken [Y/N]</b>	<b>Other meetings where matter is to be debated / considered</b>	<b>Date of Cabinet meeting</b>	<b>Part A = Public meeting  Part B = private meeting [with reasons]</b>
---------------------	-------------------------------------	--	---	--	------------------------------------	---

Colyford Road and Fosse Way Viability Assessment	Assistant Director Place Assets & Commercialisation	Colyford Road and Fosse Way Viability Assessment	No	Asset Management Forum		Part A *possibly some Part B commercially sensitive
Cloakham Lawns Employment Site Viability Assessment	Assistant Director Place Assets & Commercialisation	Colyford Road and Fosse Way Viability Assessment	No	Asset Management Forum		Part A *possibly some Part B commercially sensitive
Exmouth Town and Seafront Placemaking Plan Adoption	Assistant Director Place Assets & Commercialisation	Placemaking Plan and appendices	Yes some Strategic Outline Business Cases (SOBC)	Placemaking in Exmouth Town and Seafront Group		Part A *possibly some Part B commercially sensitive
Delivery Vehicle for Second New Community	Director for Place					
Percy Wakley Woods Suitable Alternative Natural Greenspace	Assistant Director Countryside and Leisure				26 November 2025	Part A

### Key Officer/Portfolio Holder Decisions

<b>Key Decision</b>	<b>Portfolio (Lead Officer)</b>	<b>Documents to be considered before Cabinet take decision</b>	<b>Whether other documents will be considered before decision taken [Y/N]</b>	<b>Other meetings where matter is to be debated / considered</b>	<b>Date of Cabinet meeting</b>	<b>Part A = Public meeting  Part B = private meeting [with reasons]</b>
---------------------	-------------------------------------	--	---	--	------------------------------------	---

Sale of Workshop Site, Exmouth	Estates Surveyor					Part B Portfolio Holder Assets & Economy Decision
Individual property: external and internal repairs and refurbishment	Assistant Director Housing					Part B Officer Decision
Individual property: external and internal repairs and refurbishment	Assistant Director Housing					Part B Officer Decision
Individual property: external and internal repairs and refurbishment	Assistant Director Housing					Part B Officer Decision
Procurement Support from Devon County Council – renew 5- year SLA	Director of Finance					Officer Executive Decision

Key Decision	Portfolio (Lead Officer)	Documents to be considered before Cabinet take decision	Whether other documents will be considered before decision taken [Y/N]	Other meetings where matter is to be debated / considered	Date of Cabinet meeting	Part A = Public meeting  Part B = private meeting [with reasons]
--------------	-----------------------------	--	---	--	----------------------------	---

Household Support Fund – Determining groups for targeted support	Assistant Director Customer Services, Revenues & Benefits		As per Cabinet recommendation at their meeting 30 October 2024			Officer key decision
Sewerage Treatment Plant Replacement Programme 2025/26	Planned Works & Climate Change Manager					Appointment of contractor. Request for Officer Executive Decision
Bathroom Adaptations to 20 properties	Planned Works & Climate Change Manager					Appointment of contractor. Request for Officer Executive Decision
Bathroom Adaptations to properties ED0322-24	Planned Works & Climate Change Manager					Appointment of contractor. Request for Officer Executive Decision
Structural Repairs & Refurbishment – 33, 35 & 37 Underleys, Beer	Planned Works & Climate Change Manager					Appointment of contractor. Request for Officer Executive Decision



<b>Key Decision</b>	<b>Portfolio (Lead Officer)</b>	<b>Documents to be considered before Cabinet take decision</b>	<b>Whether other documents will be considered before decision taken [Y/N]</b>	<b>Other meetings where matter is to be debated / considered</b>	<b>Date of Cabinet meeting</b>	<b>Part A = Public meeting  Part B = private meeting [with reasons]</b>
---------------------	-------------------------------------	--	---	--	------------------------------------	---

Refurbishment of Flats, Langford Avenue, Honiton	Planned Works & Climate Change Manager					Appointment of contractor. Request for Officer Executive Decision
Refurbishment of 4no. Blocks of Flats, Arcot Park, Sidmouth	Planned Works & Climate Change Manager					Appointment of contractor. Request for Officer Executive Decision
Refurbishment & Extension of 1 School Lane, Newton Popleford	Planned Works & Climate Change Manager					Appointment of contractor. Request for Officer Executive Decision
Internal Adaptations to various properties	Planned Works & Climate Change Manager					Appointment of contractor. Request for Officer Executive Decision
LAD 1 Completion – Heating & Fabric Upgrades	Planned Works & Climate Change Manager					Appointment of contractor. Request for Officer Executive Decision
Upgrade of Peazen Flats, Beer	Planned Works & Climate Change Manager					Appointment of contractor. Request for Officer Executive Decision



Key Decision	Portfolio (Lead Officer)	Documents to be considered before Cabinet take decision	Whether other documents will be considered before decision taken [Y/N]	Other meetings where matter is to be debated / considered	Date of Cabinet meeting	Part A = Public meeting  Part B = private meeting [with reasons]
--------------	-----------------------------	--	---	--	----------------------------	---

East Devon National Landscape HLF Open Programmes bid for Landscape Connections project	East Devon NL Manager	EOI Dec 2024

Key Decision	Portfolio (Lead Officer)	Documents to be considered before Cabinet take decision	Whether other documents will be considered before decision taken [Y/N]	Other meetings where matter is to be debated / considered	Date of Cabinet meeting	Part A = Public meeting  Part B = private meeting [with reasons]
--------------	-----------------------------	--	---	--	----------------------------	---